

September 2021

Datex FootPrint WMS

Installation Guide



Install and Upgrade FootPrint

Sections

- **FootPrint Prerequisites**
 - Login Requirements
 - Folder Structure Requirements
 - SSRS Reports Structure Requirements
 - Installation Files and IIS Prerequisites
- **FootPrint Installation**
 - Core FootPrint Installation
 - FootPrint Environment Database Installation
 - FootPrint Environment Service Installation
 - FootPrint Desktop Application Controller Installation
 - FootPrint Environment Manager Installation
 - FootPrint Web Portal Installation
 - FootPrint Web Application Controller Installation
 - FootPrint Mobile Desktop Installation
 - FootPrint Mobile Application Installation
 - FootPrint Environment Service Controller Installation
- **Upgrade to a New Version of FootPrint**
 - Open the FootPrint Installer
 - Install the New Version of FootPrint

The following guide can be followed for the complete installation and upgrade of Datex FootPrint Warehouse Management Software.

FootPrint Prerequisites

Login Requirements

Active Directory Accounts

Please make sure that the following users and group are available before the installation date.

1. Create a Domain user account for Datex to access the application server and database server (eg. **datexadmin**). This user must have administrator access to the application server, database server and the SQL reporting services.
2. Create a new “**FootPrintService**” domain user account. Make it a member of the FootPrintUsers group, Administrators group, and IIS_IUSRS group. This

Install and Upgrade FootPrint

account will be used to run all of the FootPrint services hosted on the application server.

3. Create a new **FootPrintUsers** group. Add all FootPrint users' accounts to it.

Folder Structure Requirements

The following folder structure is suggested for FootPrint installation. Make note that this document is written using this folder structure.

Application Server

Path	Folder Description
C:\Data	Root Folder (can be stored on C: or D:)
C:\Data\DatexInstalls	Share this folder to FootPrintUsers group with read access. This will host the installation files.
C:\Data\DatexInstalls\Footprint	This is the folder for the FootPrint installers.
C:\Data\DatexInstalls\Footprint Environment Runtime	This is the folder for the FootPrint Environment Runtime installer.
C:\Data\Shares	
C:\Data\Shares\FootPrintAttachments	Share this folder to FootPrintUsers group with write access. It is used to store attachments.
C:\Data\Shares\FootPrintLabelFiles	Share this folder to FootPrintUsers with write access. It is used to store labels.
C:\Data\Shares\FootPrintReports	Share this folder to FootPrintUsers group with write access. It is used to store the reports.
C:\Data\Shares\FootPrintReports\StandardReports	
C:\Data\Shares\FootPrintReports\CustomReports	

Database Server

Path	Folder Description
D:\Data	Root Folder
D:\Data\SQL	

Path	Folder Description
D:\Data\SQL\DataFiles	This is the folder for the SQL Files. MSSQL requires parameter configuration to use this folder for SQL Data Files.
D:\Data\SQL\Backup	This is the folder for the SQL Backup Files. MSSQL requires parameter configuration to use this folder for SQL Backup Files.

SSRS Reports Structure Requirements

FootPrint Reports can be configured to use SQL Reporting Services. The following structure is suggested for the FootPrint Installation.

Reports Server

Path	Folder Description
http://ServerName/Datex/Footprint	Root Folder. Add browser permissions to the FootPrintUsers group.
http://ServerName/Datex/Footprint/DataSource	Create a footprint datasource. The datasource is shared and used by the footprint reports.
http://ServerName/Datex/Footprint/Models	This is the location for the report Models.
http://ServerName/Datex/Footprint/CustomReports	Upload all custom reports to this location and configure the reports to use the shared datasource.
http://ServerName/Datex/Footprint/StandardReports	Upload all custom reports to this location and configure the reports to use the shared datasource.

Installation Files and IIS Prerequisites

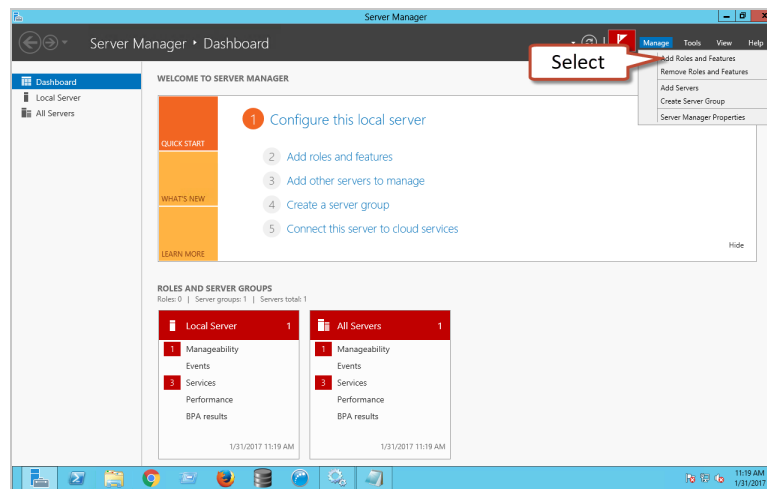
Installation Files

1. Download the latest FootPrint Installer from the ftp site <ftp://eportal.datexcorp.com>.
2. Copy and extract the files to C:\Data\DatexInstalls\Footprint folder.

Verify IIS Requirements




Note

If you are missing any of these features, please ensure that your server roles have the appropriate settings and features enabled. This can be accessed from the **Server Manager**, by selecting **Manage**, and then **Add Roles & Features**. See the [System Requirements guide for the necessary settings and features](#).



Step 1. Check Roles

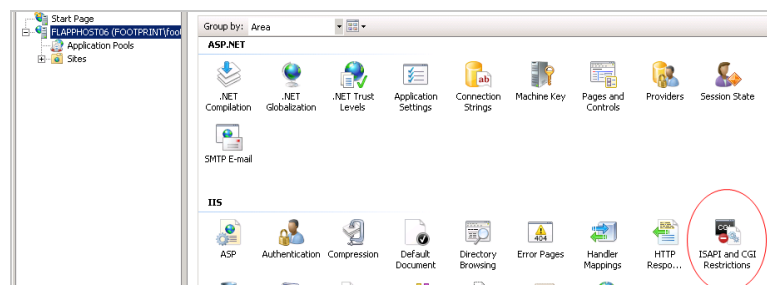
1. Go to **Start > Administrative Tools > Server Manager**.
2. Click **Roles** and go to **Web Server (IIS)** roles.
3. Make sure the following roles are installed:
 - **ASP.NET**
 - **IIS 6 Management Compatability**

	ASP.NET	Installed
	.NET Extensibility	Installed
	ASP	Installed

	IIS 6 Management Compatibility	Installed
	IIS 6 Metabase Compatibility	Installed
	IIS 6 WMI Compatibility	Installed
	IIS 6 Scripting Tools	Installed
	IIS 6 Management Console	Installed

Step 2. IIS Settings

1. Open IIS and click on the **IIS server**.
2. On the Features View, double-click **ISAPI and CGI Restrictions**.



3. Make sure **ASP.NET 4.0** is "Allowed".

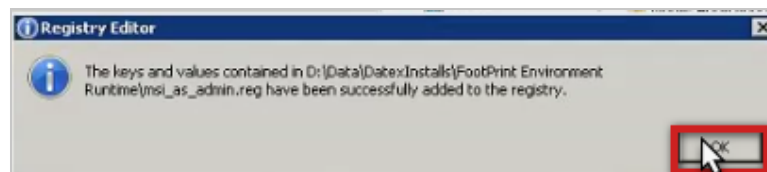
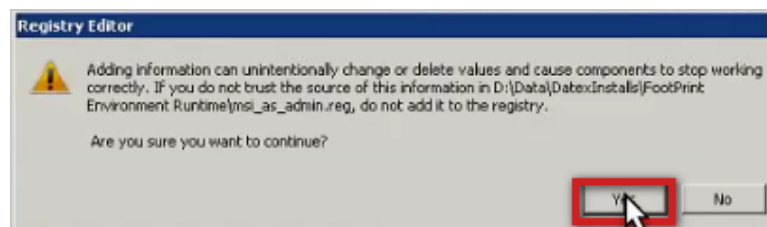
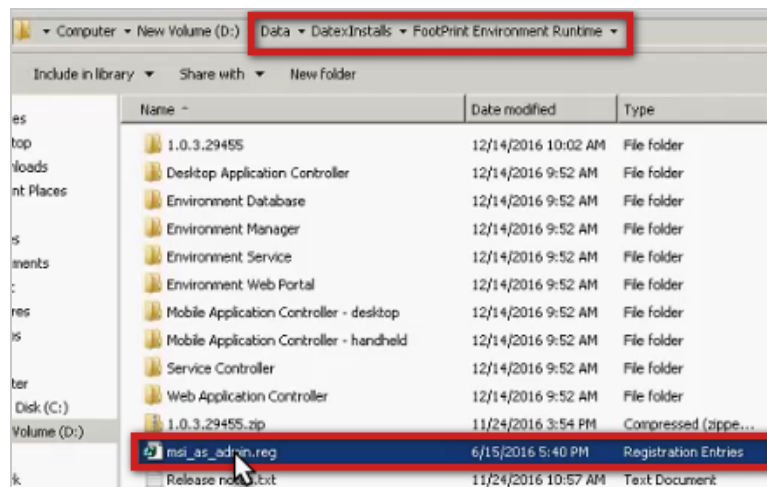
ISAPI and CGI Restrictions		
Use this feature to specify the ISAPI and CGI extensions that can run on the Web server.		
Group by: No Grouping		
Description	Restriction	Path
Active Server Pages	Allowed	%windir%\system32\inetsrv\asp.dll
ASP.NET v2.0.50727	Allowed	%windir%\Microsoft.NET\Framework\v2.0.50727\aspnet_isapi.dll
ASP.NET v2.0.50727	Allowed	%windir%\Microsoft.NET\Framework64\v2.0.50727\aspnet_isapi.dll
ASP.NET v4.0.30319	Allowed	C:\Windows\Microsoft.NET\Framework\v4.0.30319\aspnet_isapi.dll
ASP.NET v4.0.30319	Allowed	C:\Windows\Microsoft.NET\Framework64\v4.0.30319\aspnet_isapi.dll

FootPrint Installation

Registry Key Installation

Before full installation of FootPrint can occur, there is a Registry Key in the Footprint Environment Runtime folder that must be installed. This enables all other aspects of the installation to run as administrator.

1. Run the **msi_as_admin.reg** file from the **C:\Data\Datex\Installs\FootPrint Environment Runtime** folder, following the on-screen instructions.



Environment Manager Prerequisites Installation

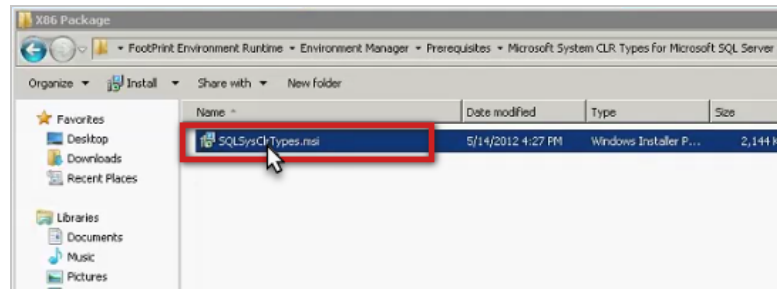
Before full installation of FootPrint can occur, there are four prerequisite files that must be installed. These are all found in the **C:\Data\DatexInstalls\Footprint Environment Runtime\Environment Manager\Prerequisites** folder, under the sub-folders of **X86 Package** and **X64 Package**

Note

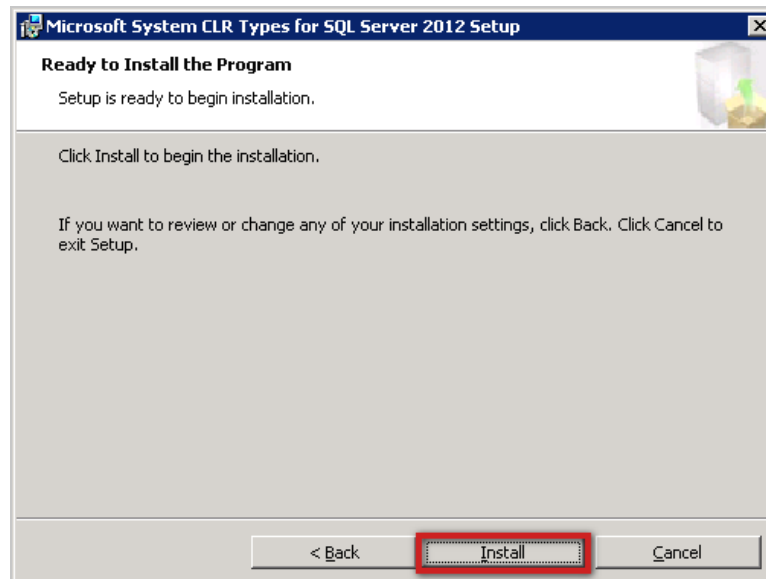
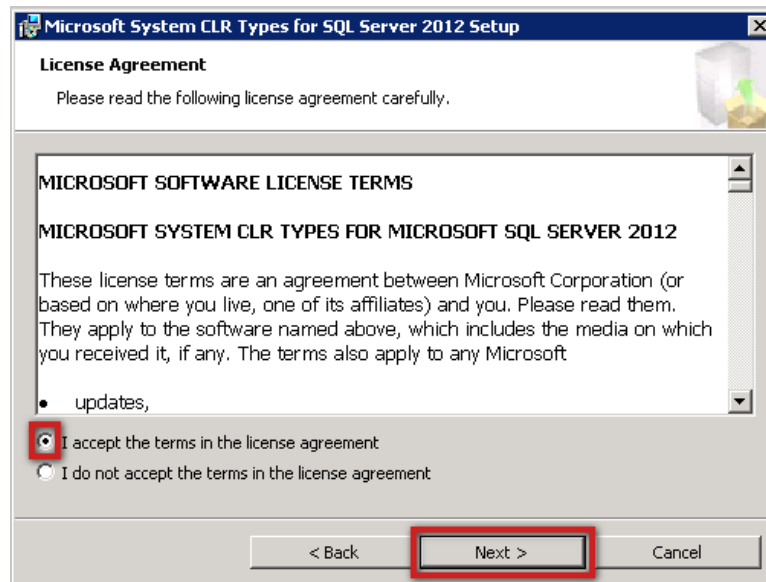
While this tutorial details the installation of only one of these files, the process is mirrored for all four, and all of these files *must* be installed.

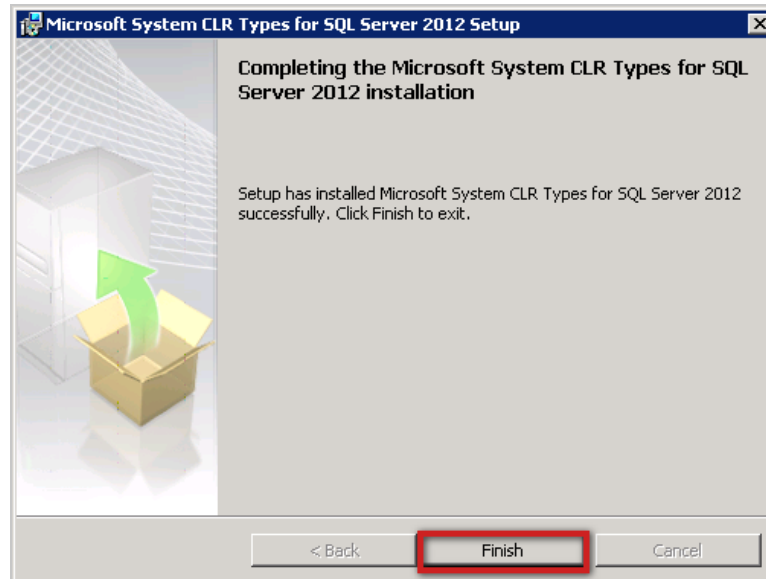
Install and Upgrade FootPrint

1. Run the **SQLSysClrTypes.msi** file from **C:\Data\DatexInstalls\Footprint Environment Runtime\Environment Manager\Prerequisites\Microsoft CLR Types for Microsoft SQL Server 2012\X86 Package** folder, following the on-screen instructions.



Install and Upgrade FootPrint





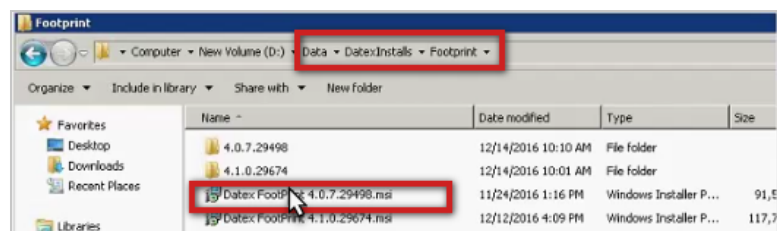
2. Repeat the above process for the **SQLSysClrTypes.msi** file from **C:\Data\DatexInstalls\Footprint Environment Runtime\Environment Manager\Prerequisites\Microsoft CLR Types for Microsoft SQL Server 2012\X64 Package** folder, following the on-screen instructions.

3. Repeat the above process for the **SharedManagementObjects.msi** file from **C:\Data\DatexInstalls\Footprint Environment Runtime\Environment Manager\Prerequisites\Microsoft SQL Server 2012 Shared Management Objects\X86 Package** folder, following the on-screen instructions.

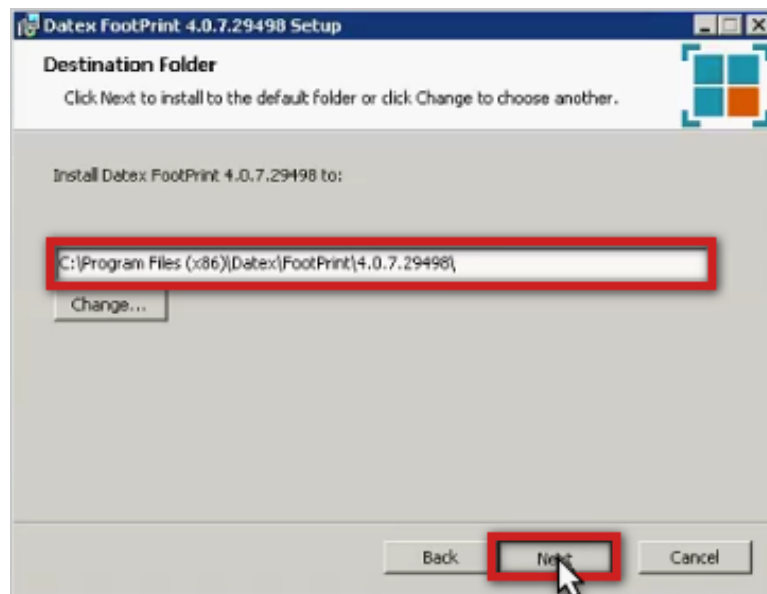
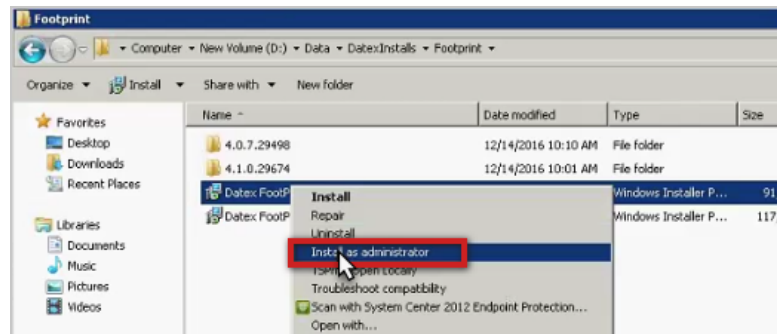
4. Repeat the above process for the **SharedManagementObjects.msi** file from **C:\Data\DatexInstalls\Footprint Environment Runtime\Environment Manager\Prerequisites\Microsoft SQL Server 2012 Shared Management Objects\X64 Package** folder, following the on-screen instructions.

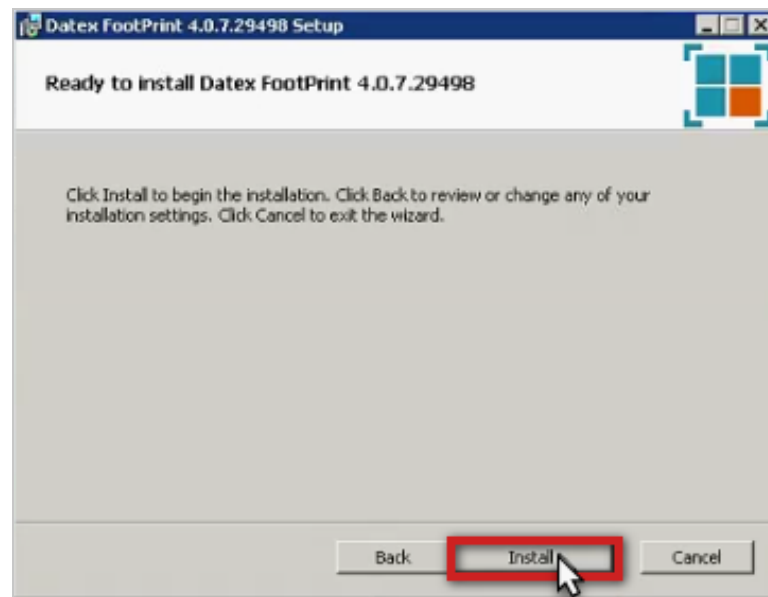
Core FootPrint Installation

1. Run the core FootPrint setup from **C:\Data\DatexInstalls\Footprint\Datex FootPrint (version number).msi** by right-clicking and then selecting "Install as Administrator". Then follow the on-screen instructions.



Install and Upgrade FootPrint

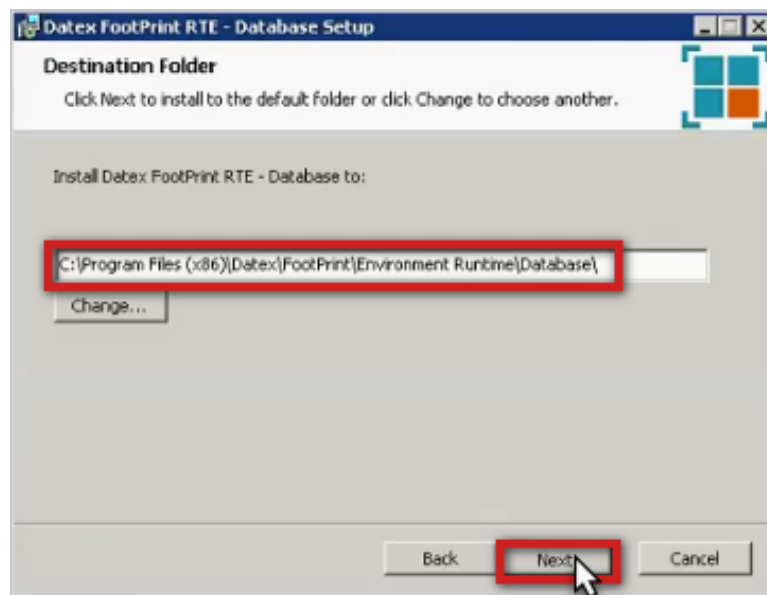
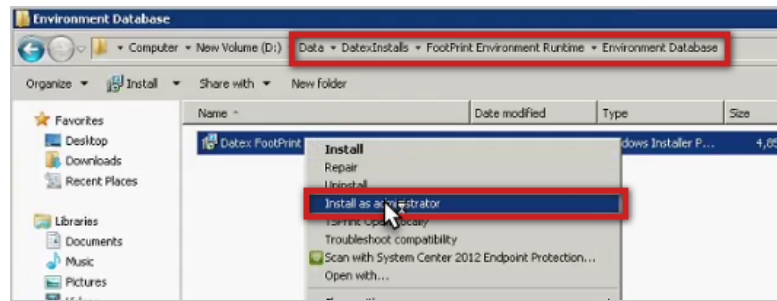


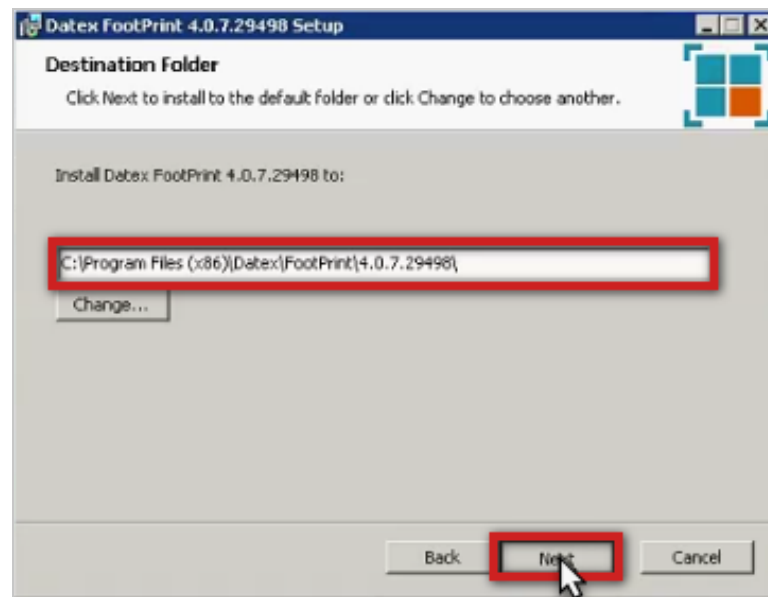


FootPrint Environment Database Installation

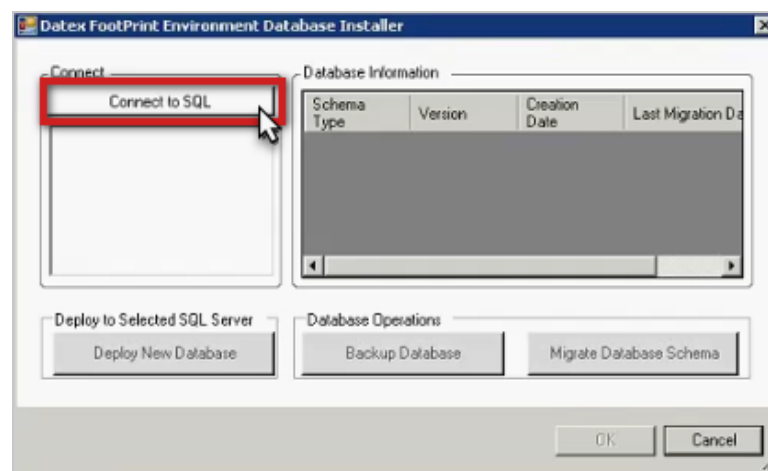
1. Run the FootPrint Environment Database setup from **C:\Data\Datex\Installs\Footprint Environment Runtime\Environment Database\Datex FootPrint Runtime Environment - Database.msi** by right-clicking and then selecting "Install as Administrator". Then follow the on-screen instructions.

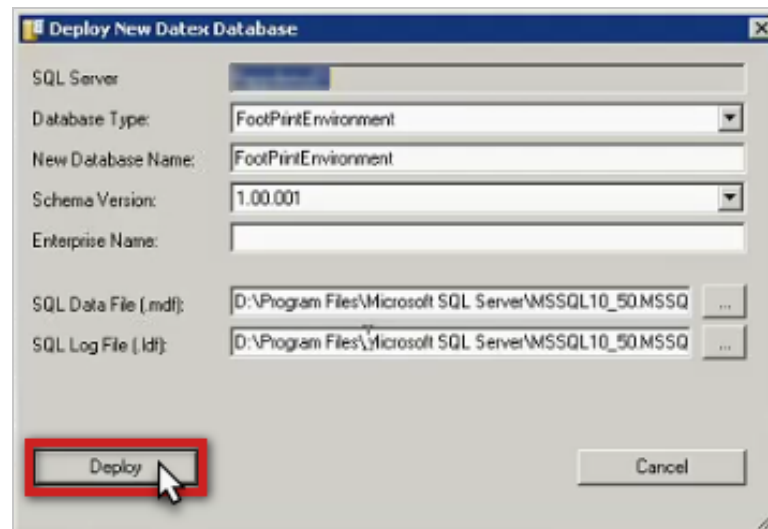
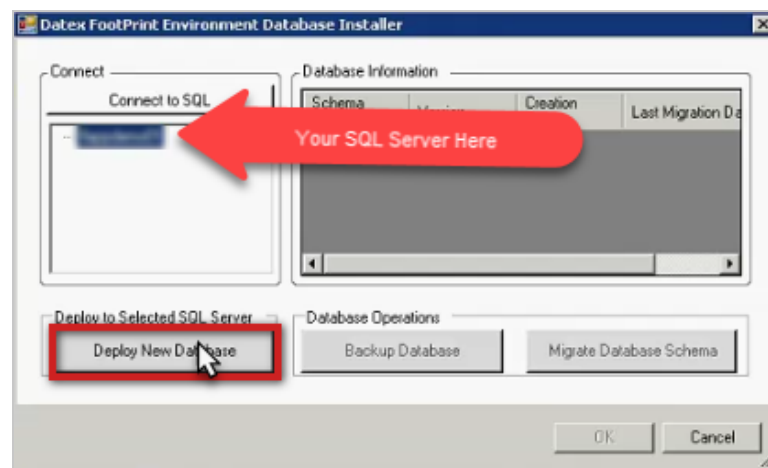
Install and Upgrade FootPrint

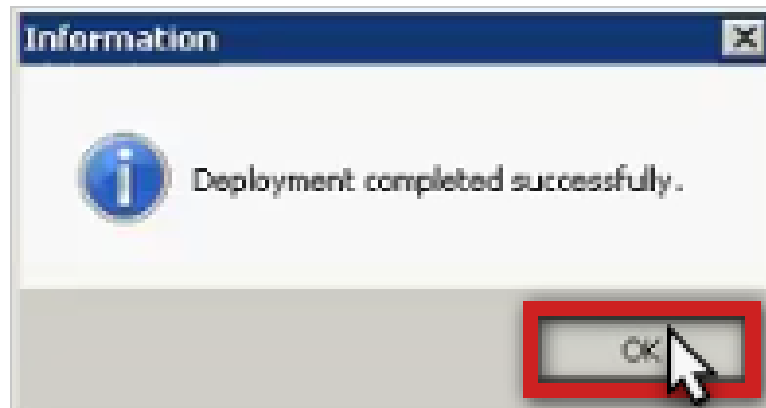
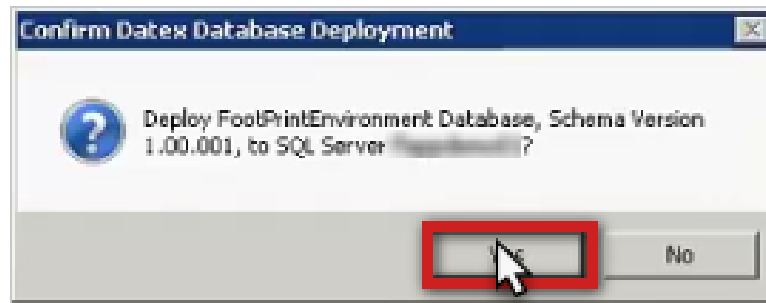




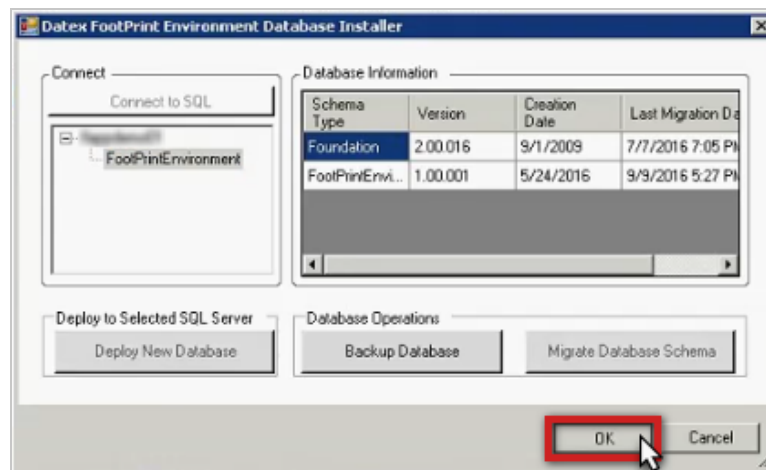
2. Connect to your operation's SQL Server where you want to deploy the Database by clicking the **Connect to SQL** button. Then, follow the onscreen instructions to enter the Server name and any other applicable authentication details as necessary. Lastly, click the **Deploy New Database** button on the Installer and the following Pop-up.







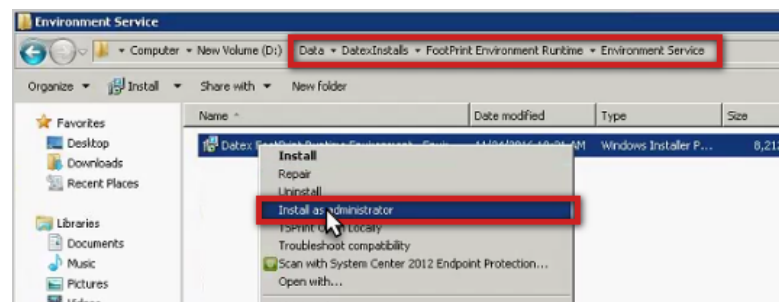
3. Finish the Database set up by clicking the **OK** button on the SQL Server screen and then clicking the **Finish** button on the installation confirmation screen..

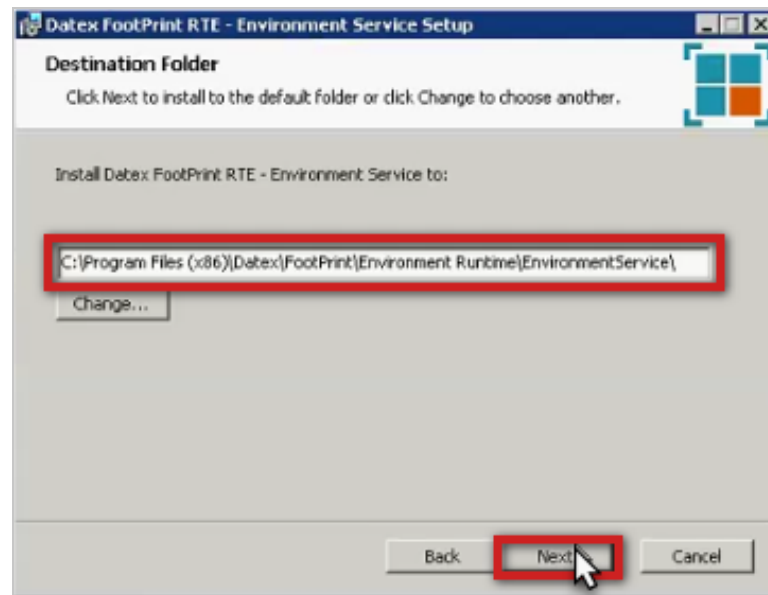




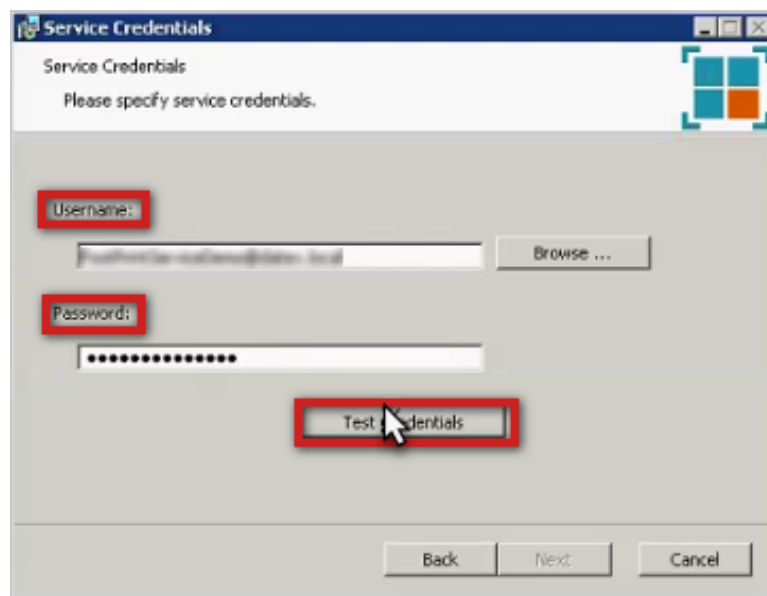
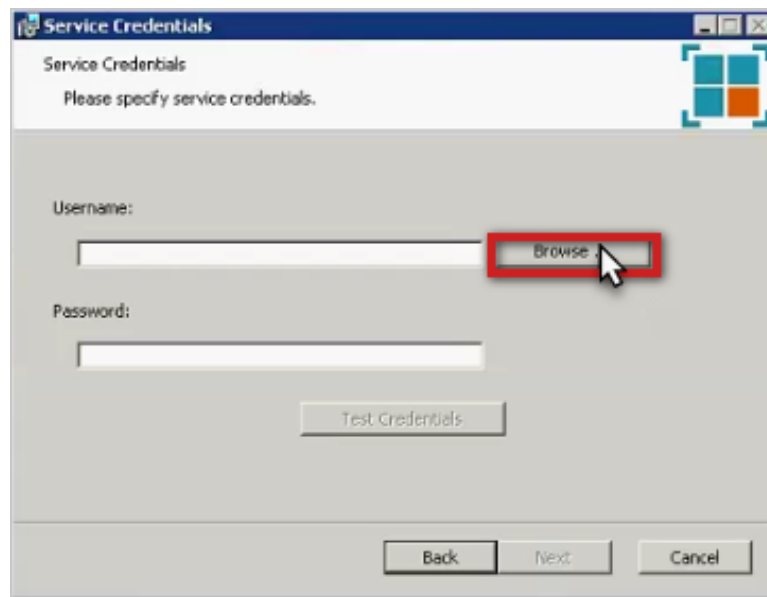
FootPrint Environment Service Installation

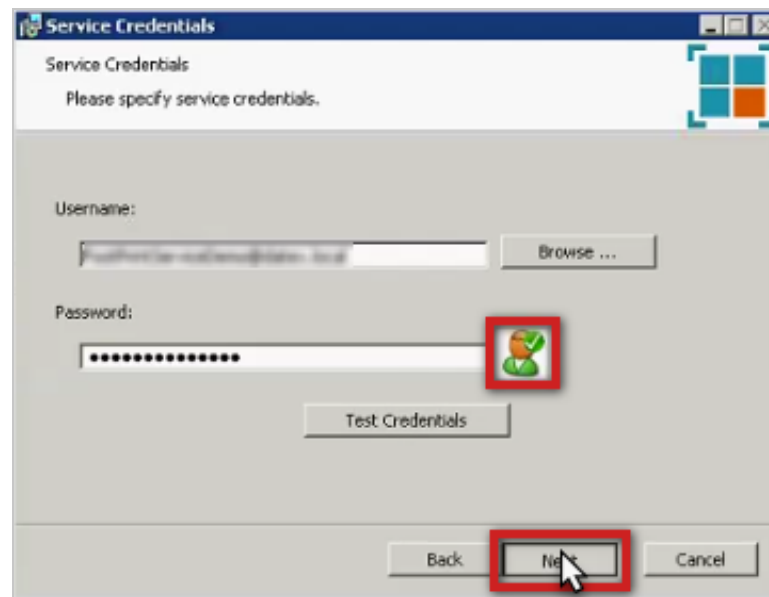
1. Run the FootPrint Environment Service setup from **C:\Data\Datex\Installs\Footprint Environment Runtime\Environment Service\Datex FootPrint Runtime Environment - Service.msi** by right-clicking and then selecting "Install as Administrator". Then follow the on-screen instructions.



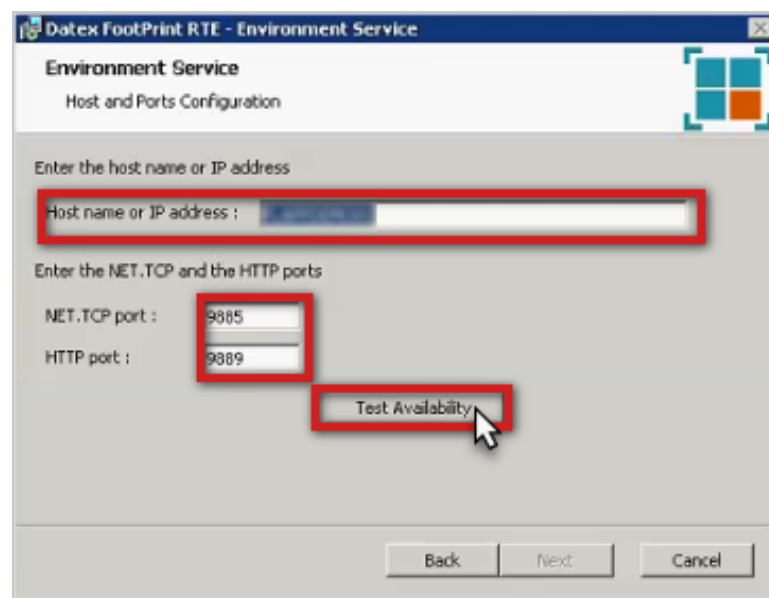


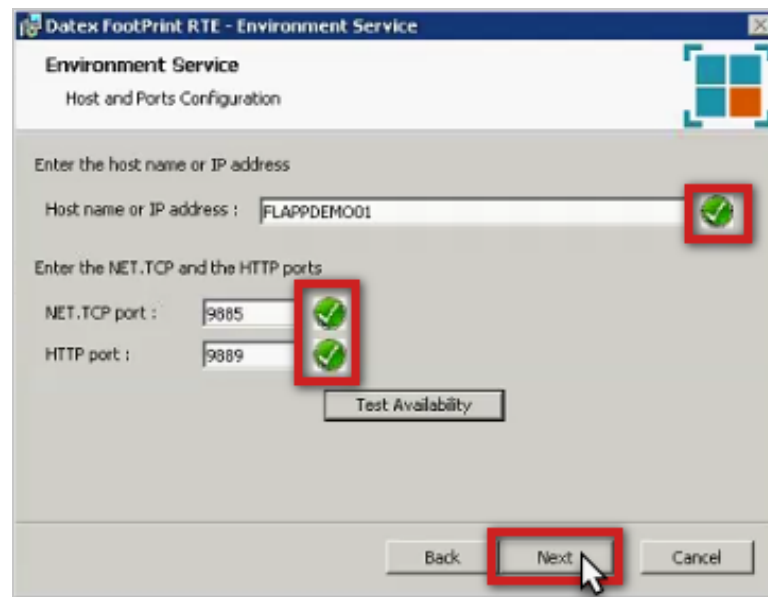
2. Enter your service account **Username** and **Password** credentials for your operation as created in your initial pre-requirements, clicking **Browse** if necessary. Then, click the **Test Credentials** button to ensure that the credentials match, and then click **Next**.



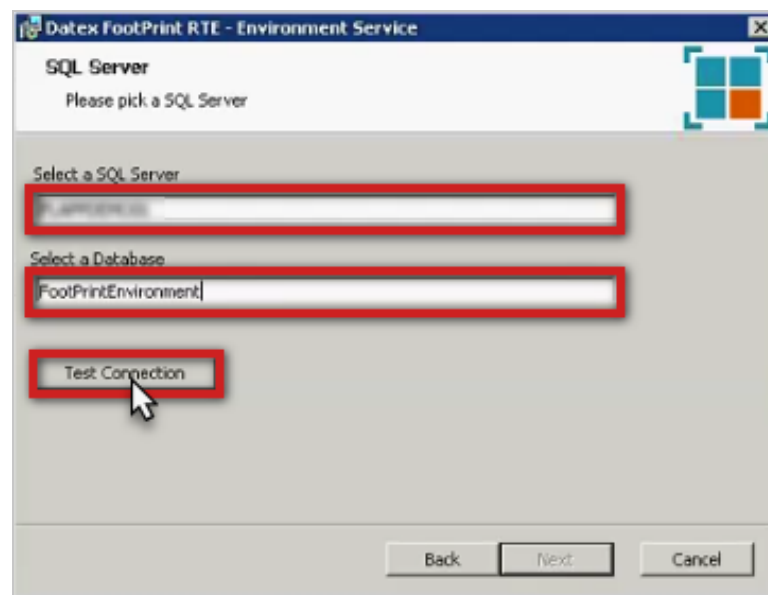


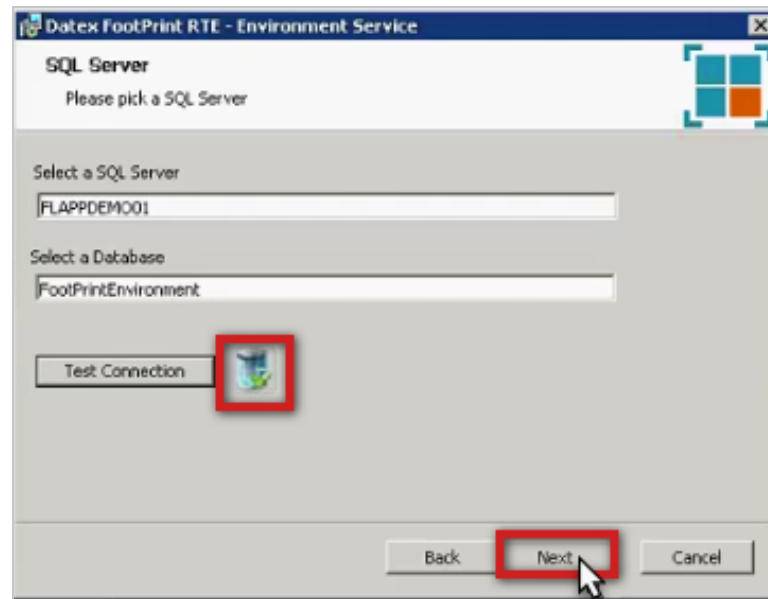
3. The **Host Name or IP address** field should match the Host or IP where your SQL Server is located. Ensure that the following ports are entered: **9885** for the NET.TCP port, and **9889** for the HTTP port. Next, click the **Test Availability** button to ensure that the connection is good. If all fields are given the green check-mark, click the **Next** button to proceed.



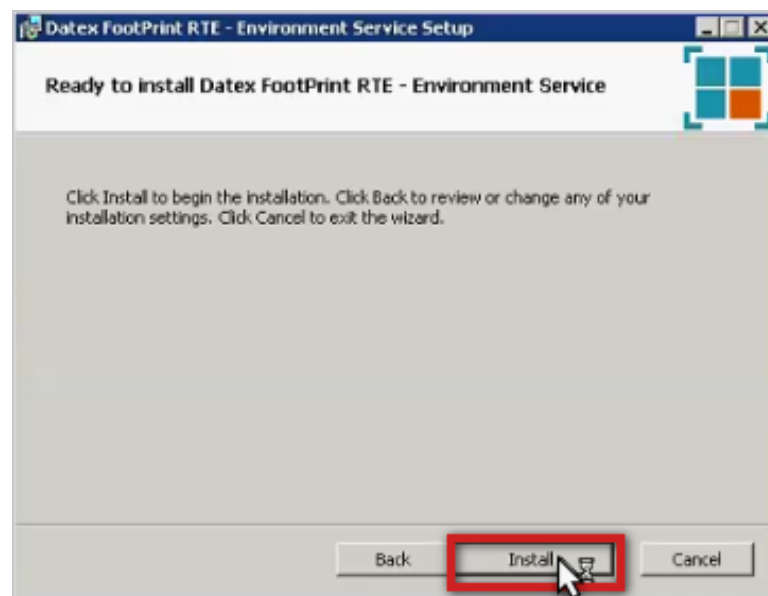


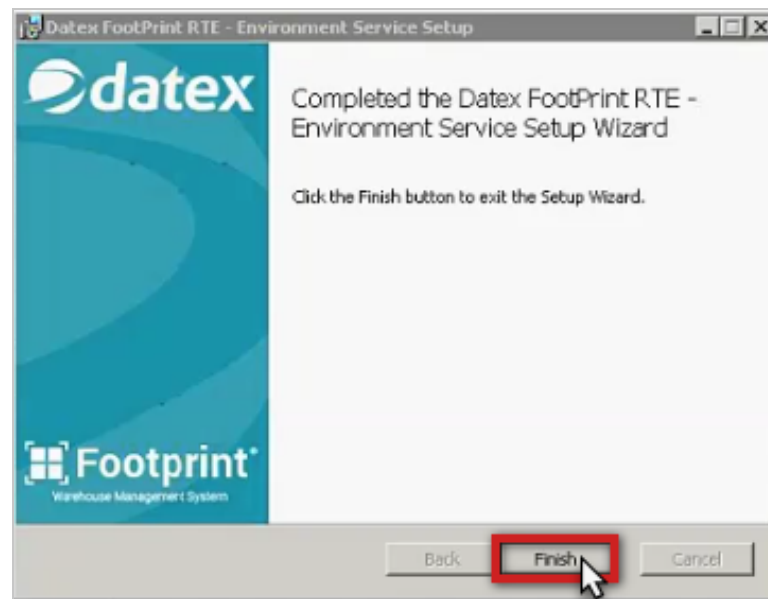
4. Enter the SQL Server name into the **Select a SQL Server** field, and the Database into the **Select a Database** field. The SQL Server should match the Server created in the previous steps, and the Database name should be **FootPrintEnvironment**. Click **Test Connection** to ensure that the information is correct and then click **Next**.





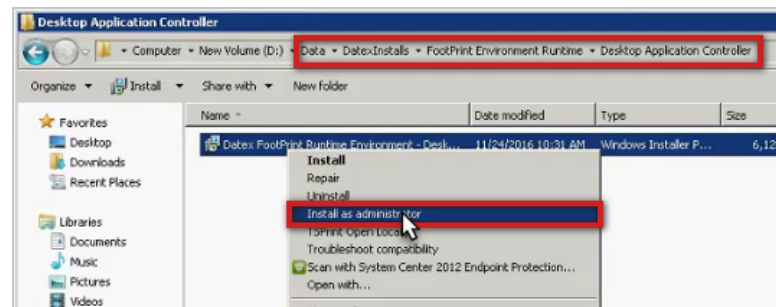
5. Finish the Environment Service set up by clicking **Install** button. Once it is complete, click the **Finish** button to close the Environment Service Setup Wizard.

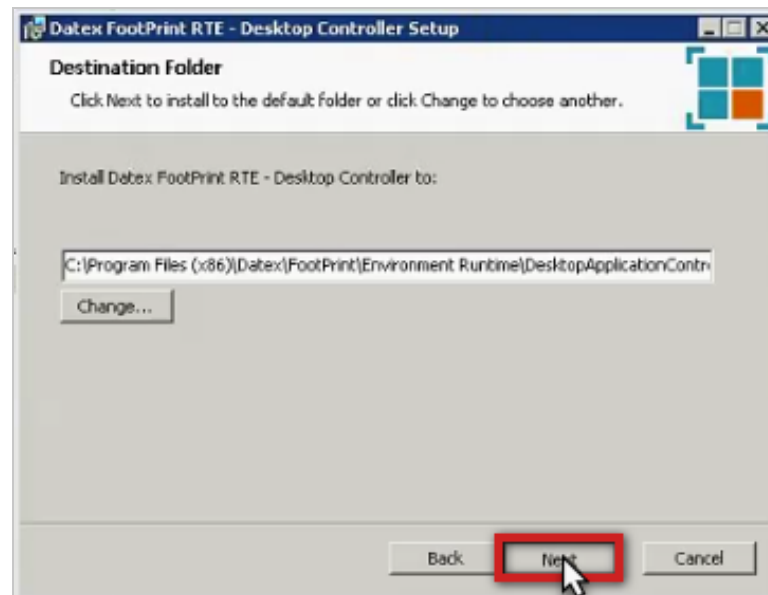




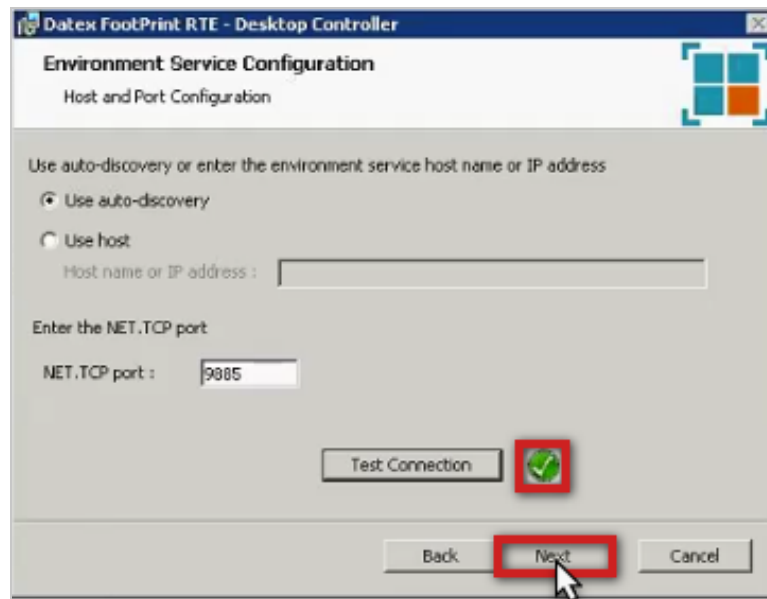
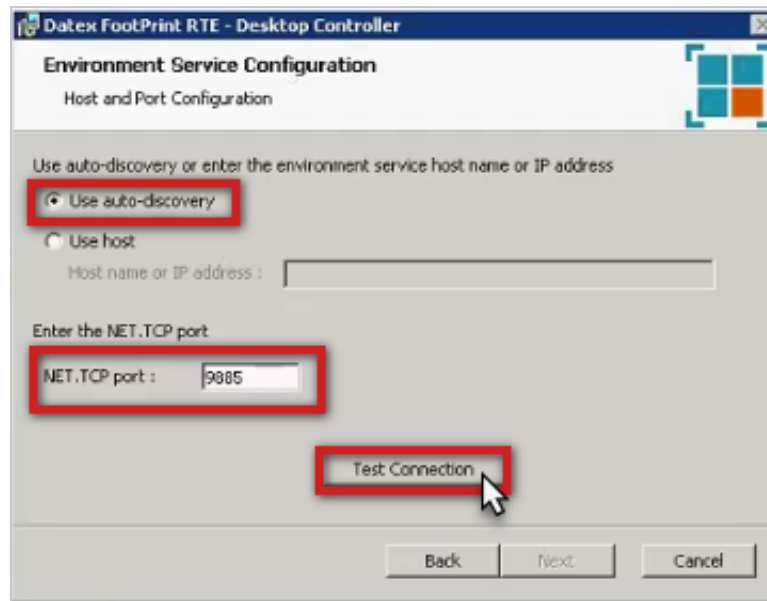
FootPrint Desktop Application Controller Installation

1. This procedure will install the Desktop Application Controller as well as place the FootPrint icon on the Desktop of the computer running the installation. Run the FootPrint Desktop Application Controller setup from **C:\Data\Datex\Installs\Footprint Environment Runtime\Desktop Application Controller\Datex FootPrint Runtime Environment - Application Controller.msi** by right-clicking and then selecting "Install as Administrator". Then follow the on-screen instructions.

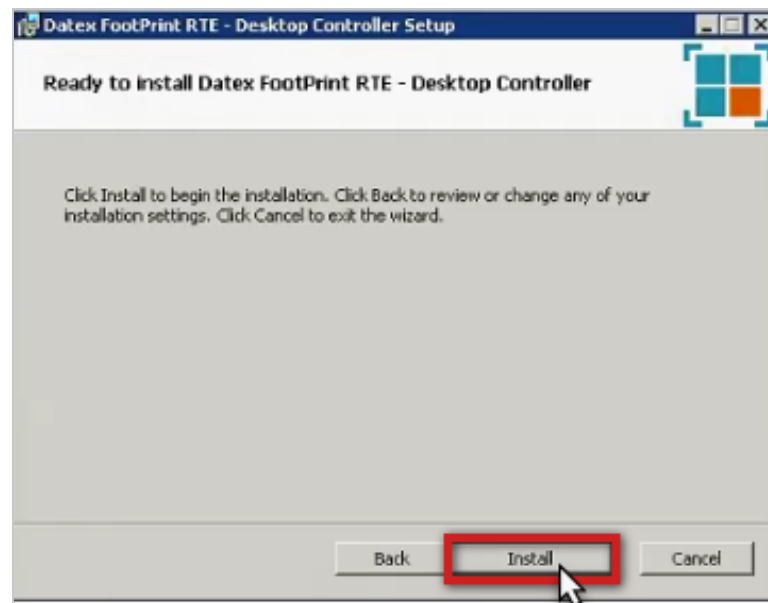




2. For setting up the production environment, you will be selecting **Use auto-discovery**. If setting up a test server connection, click **Use host** and enter the Host name or IP address for the test environment. In either situation, the NET.TCP port should be left as **9885**. Click Test Connection and if confirmed, you can click **next**.



3. Finish the Desktop Controller set up by clicking **Install** button. Once it is complete, click the **Finish** button to close the Environment Service Setup Wizard.

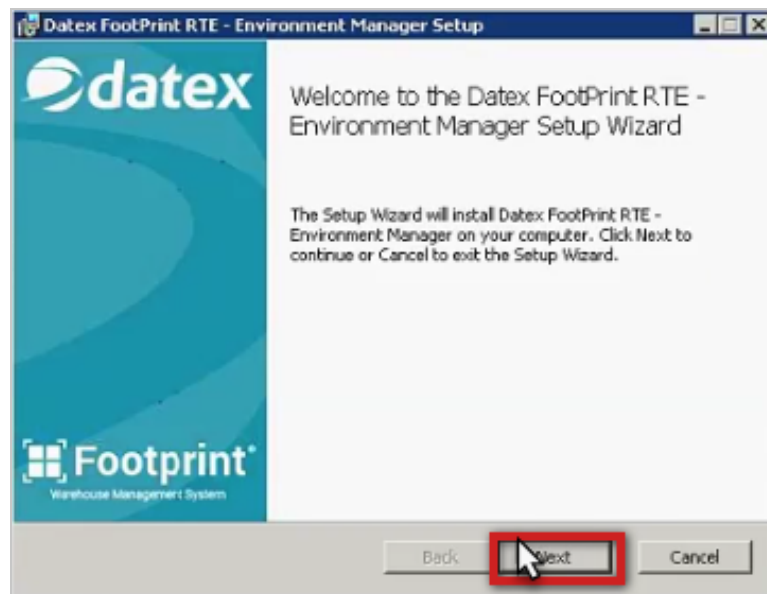
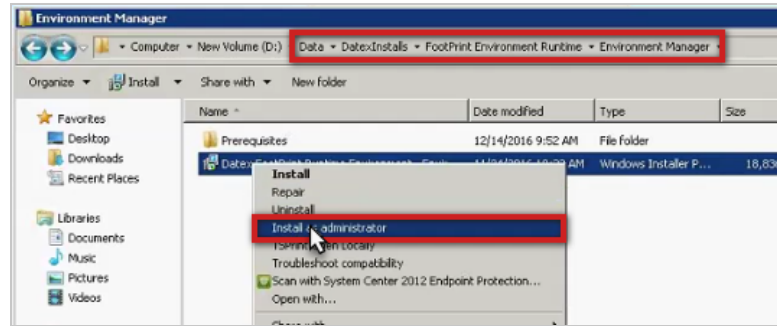


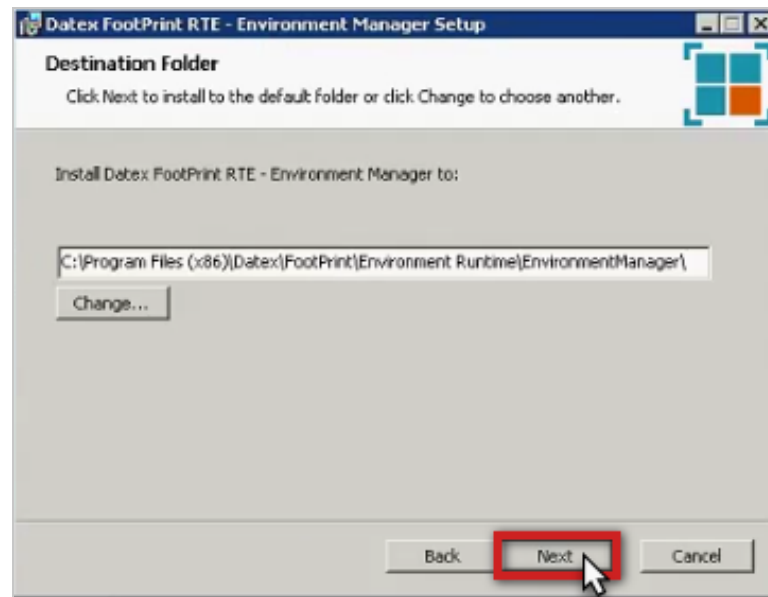
FootPrint Environment Manager Installation

1. This procedure will install the FootPrint Environment Manager as well as place the FootPrint Environment Manager icon on the Desktop of the computer running the installation. Run the FootPrint Environment Manager setup from **C:\Data\Datex\Installs\Footprint Environment Runtime\Environment Manager\Datex FootPrint Runtime Environment - Environment Manager.msi** by right-clicking and then selecting "Install as Administrator".

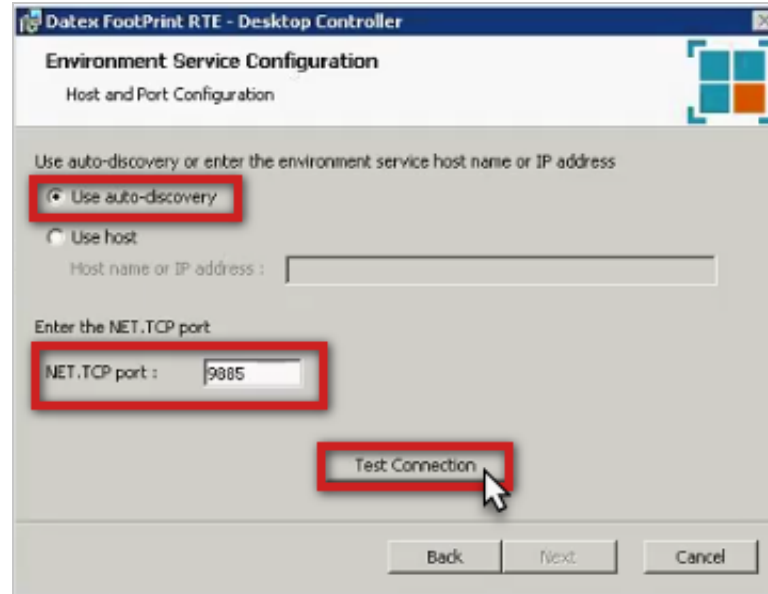
Install and Upgrade FootPrint

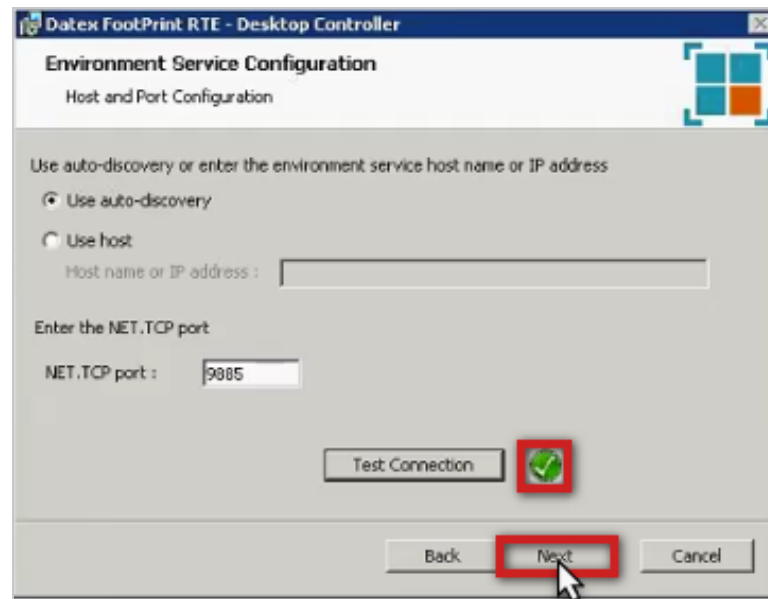
Then follow the on-screen instructions.



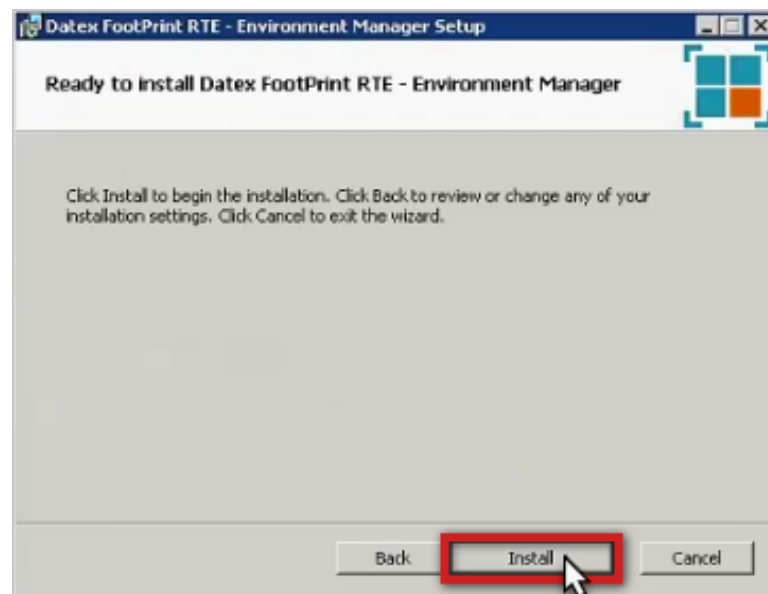


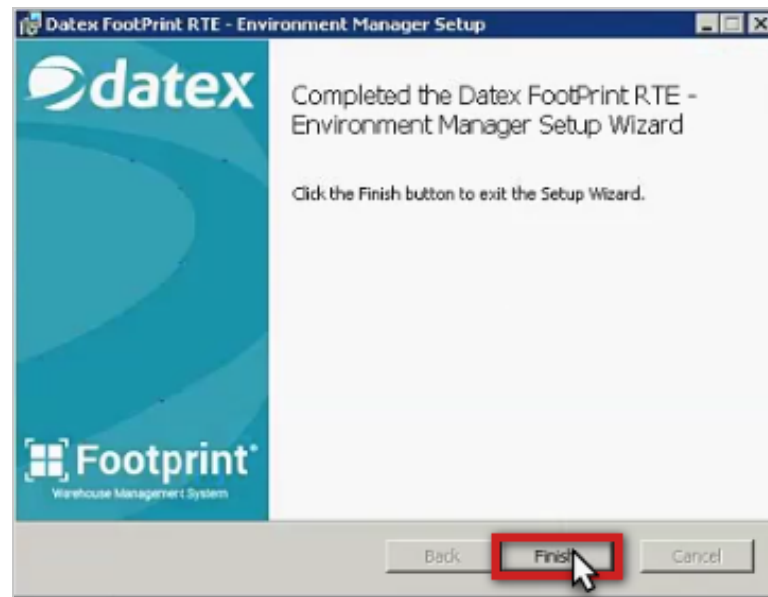
2. For setting up the production environment, you will be selecting **Use auto-discovery**. If setting up a test server connection, click **Use host** and enter the Host name or IP address for the test environment. In either situation, the NET.TCP port should be left as **9885**. Click Test Connection and if confirmed, you can click **next**.





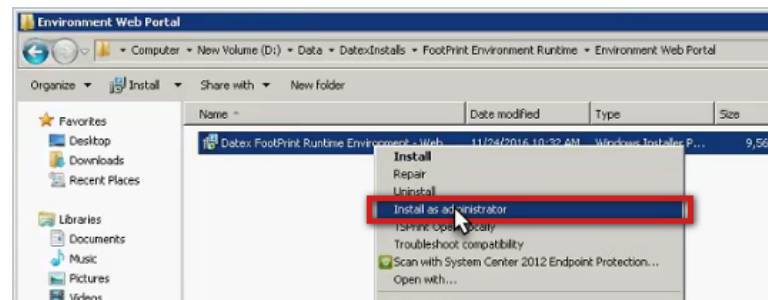
3. Finish the Environment Manager set up by clicking **Install** button. Once it is complete, click the **Finish** button to close the Environment Service Setup Wizard.

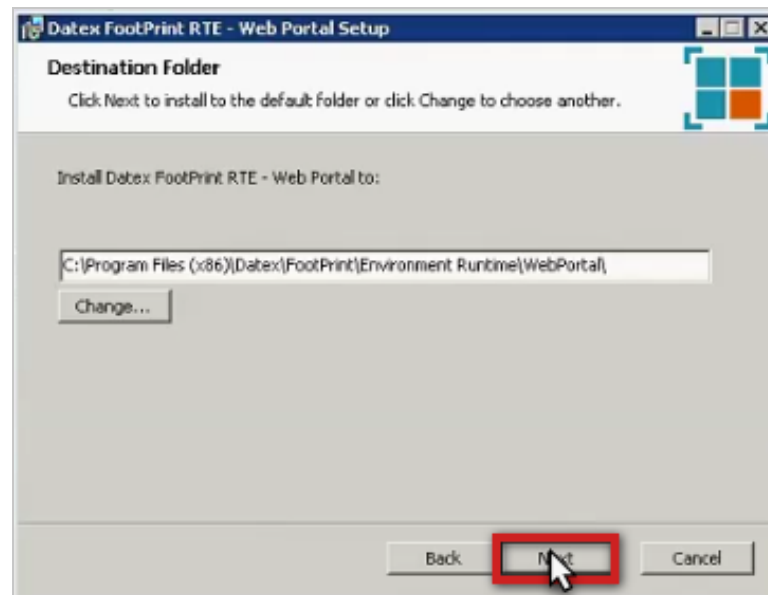
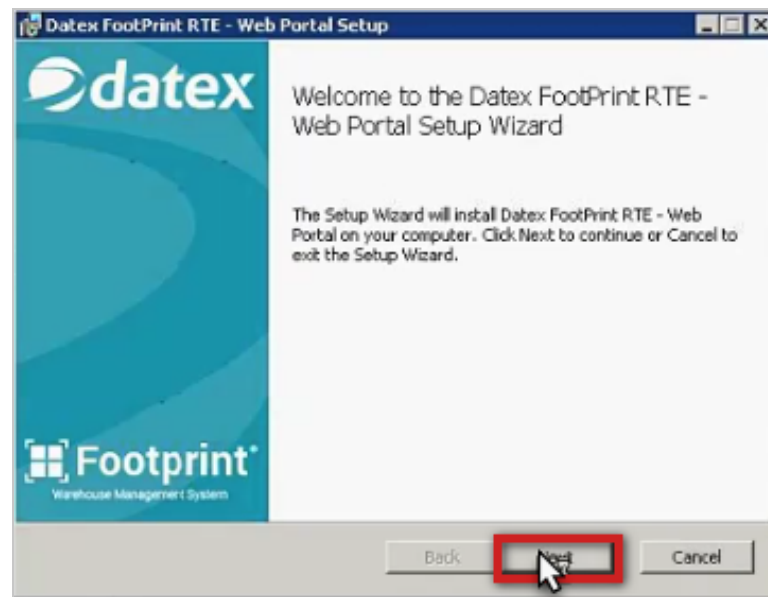




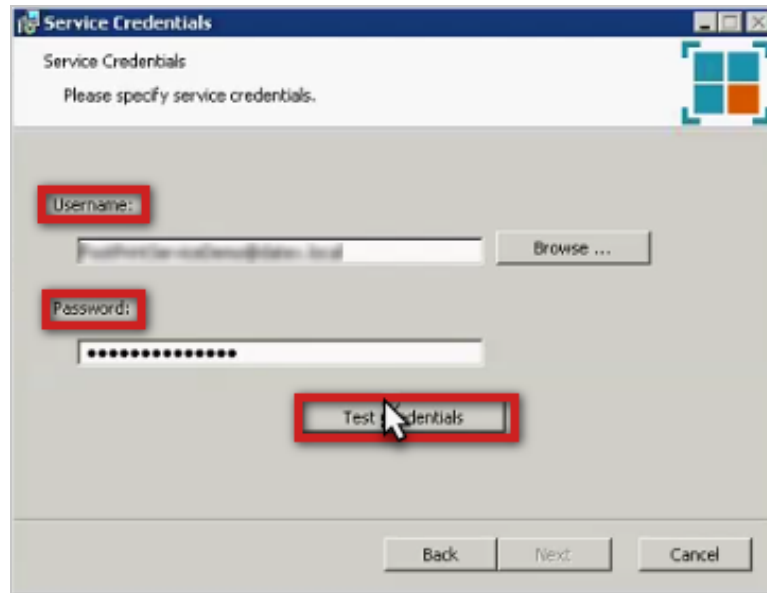
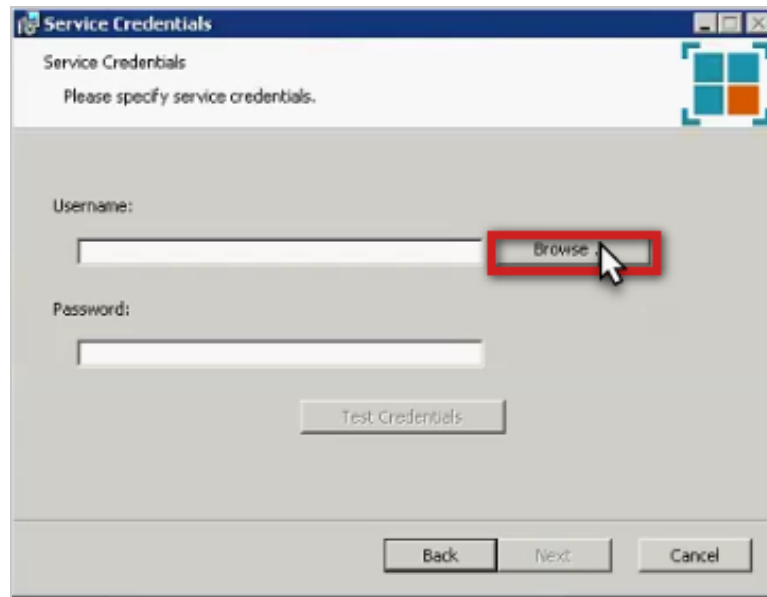
FootPrint Web Portal Installation

1. Run the FootPrint Web Portal setup from **C:\Data\DatexInstalls\Footprint Environment Runtime\Environment Web Portal\Datex FootPrint Runtime Environment - Web Portal.msi** by right-clicking and then selecting "Install as Administrator". Then follow the on-screen instructions.

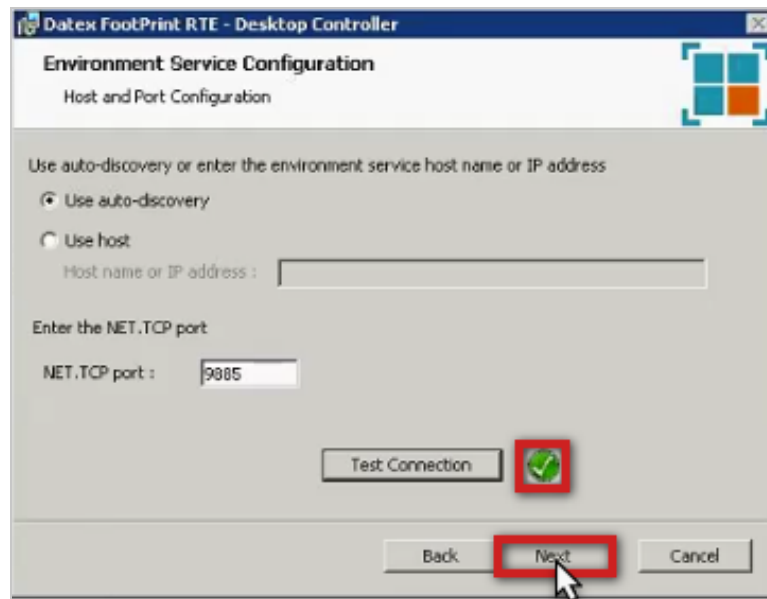
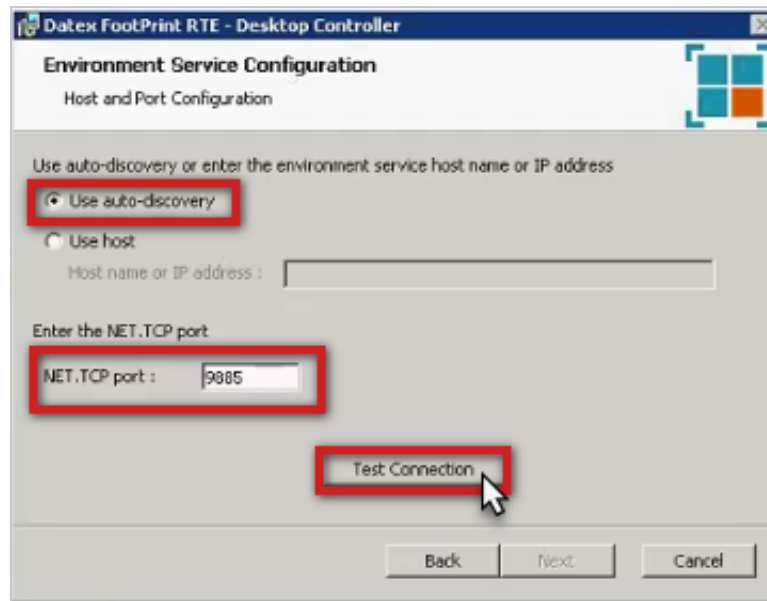




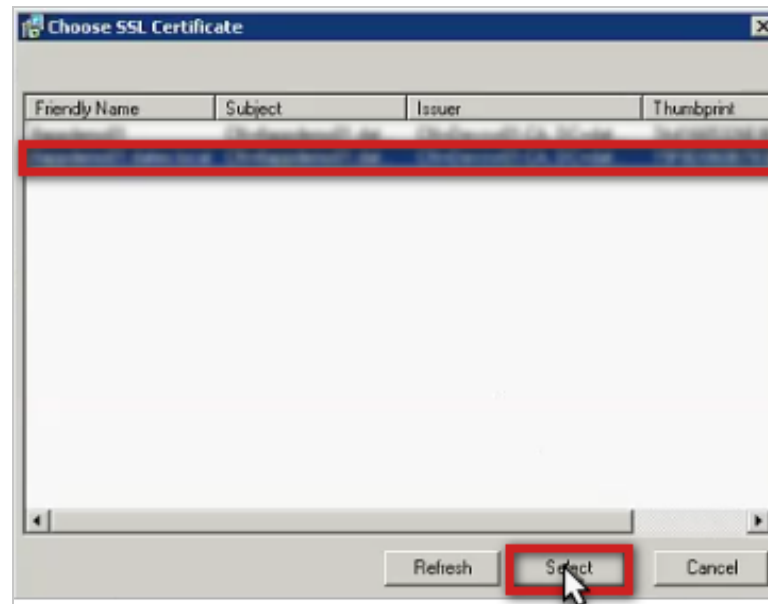
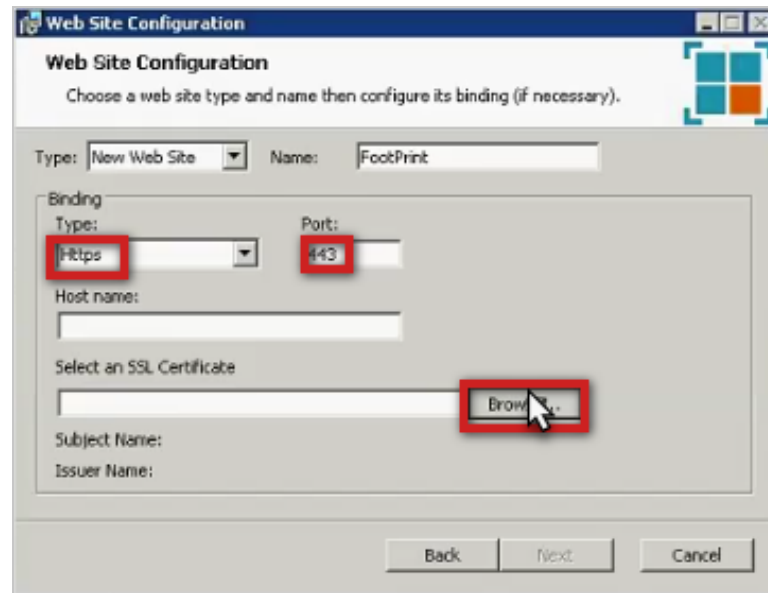
2. Enter your service account **Username** and **Password** credentials for your operation as created in your initial pre-requirements, clicking **Browse** if necessary. Then, click the **Test Credentials** button to ensure that the credentials match, and then click **Next**.

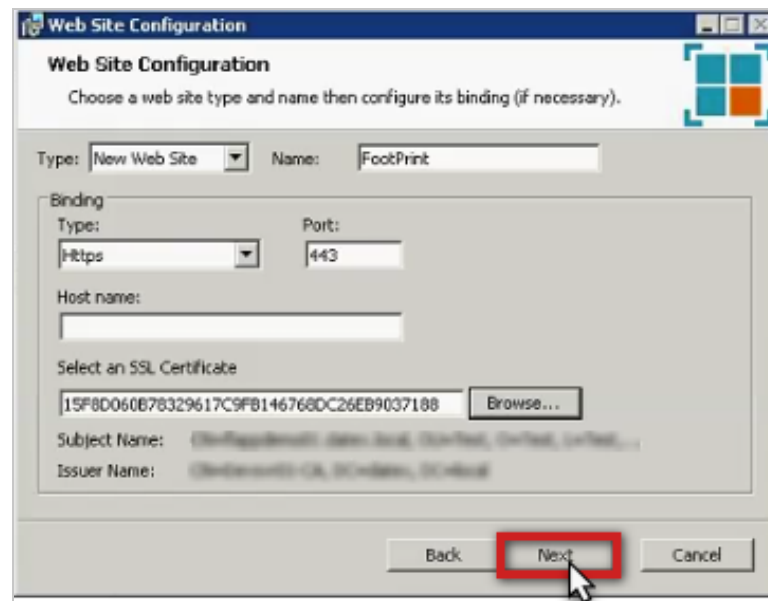


3. For setting up the production environment, you will be selecting **Use auto-discovery**. If setting up a test server connection, click **Use host** and enter the Host name or IP address for the test environment. In either situation, the NET.TCP port should be left as **9885**. Click Test Connection and if confirmed, you can click **next**.

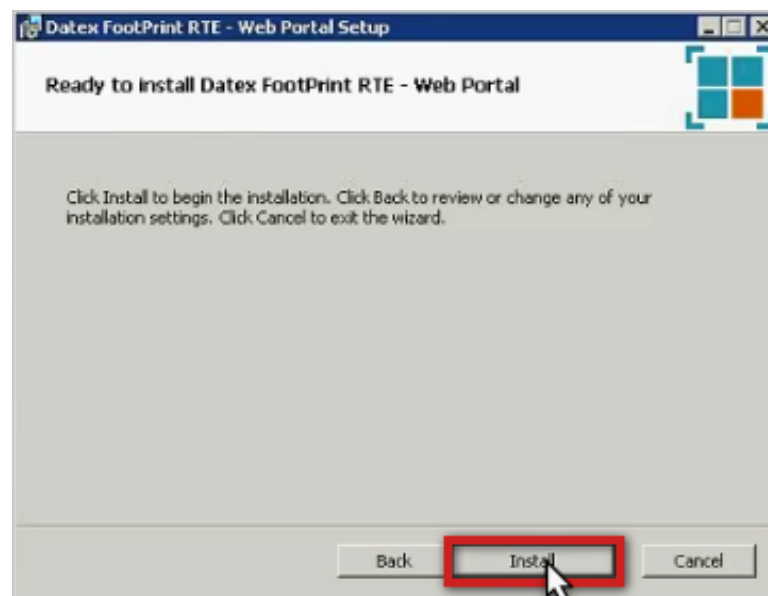


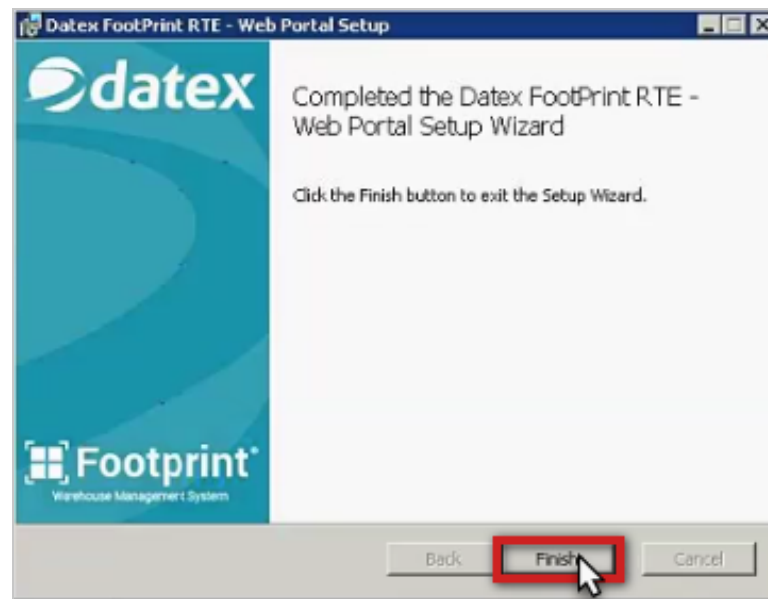
4. A new site is created for the Web Portal using the existing SSL certificate created during your prerequisites. Leave the fields blank other than **Type: Https** and **Port: 443**. If you have several Hosts available, then you will enter the Host Name name here as well. Click the **Browse** button and then **Select** the SSL Certificate to be used with the Web Portal.





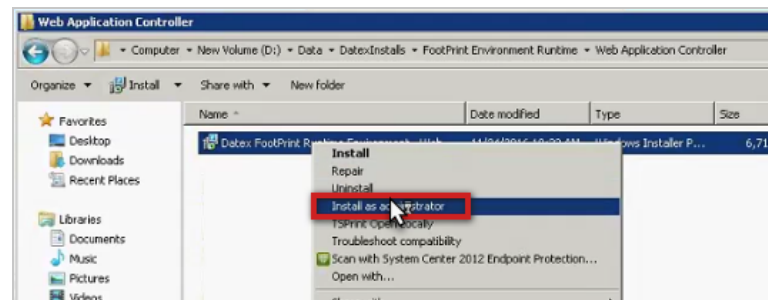
5. Finish the Web Portal set up by clicking **Install** button. Once it is complete, click the **Finish** button to close the Environment Service Setup Wizard.





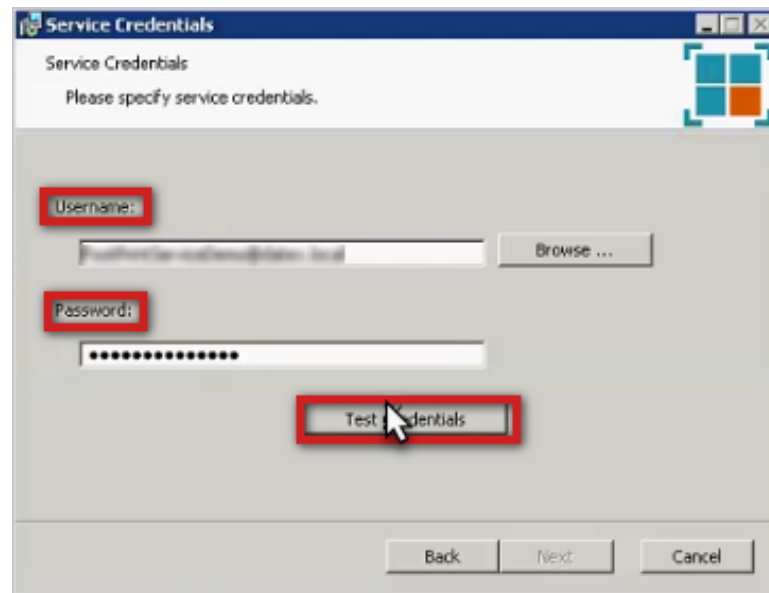
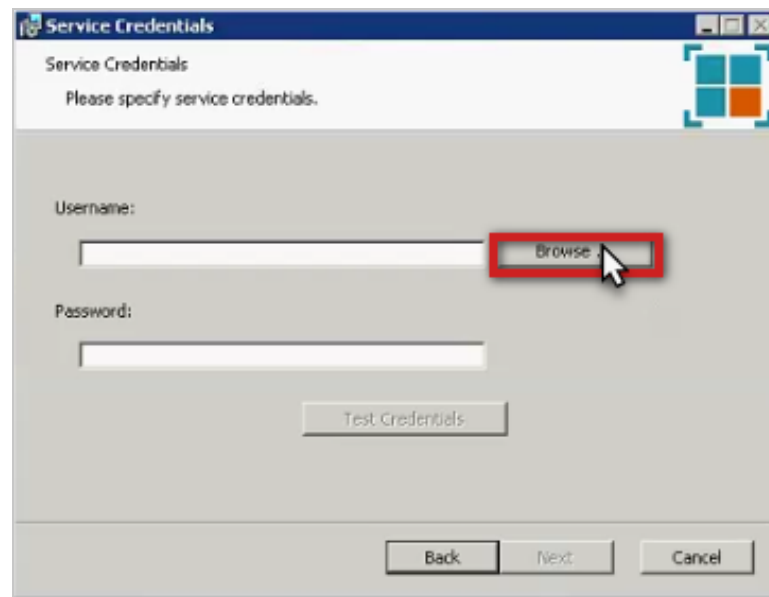
FootPrint Web Application Controller Installation

1. Run the FootPrint Web Application Controller setup from **C:\Data\Datex\Installs\Footprint Environment Runtime\Web Application Controller\Datex FootPrint Runtime Environment - Web Application Controller.msi** by right-clicking and then selecting "Install as Administrator". Then follow the on-screen instructions.

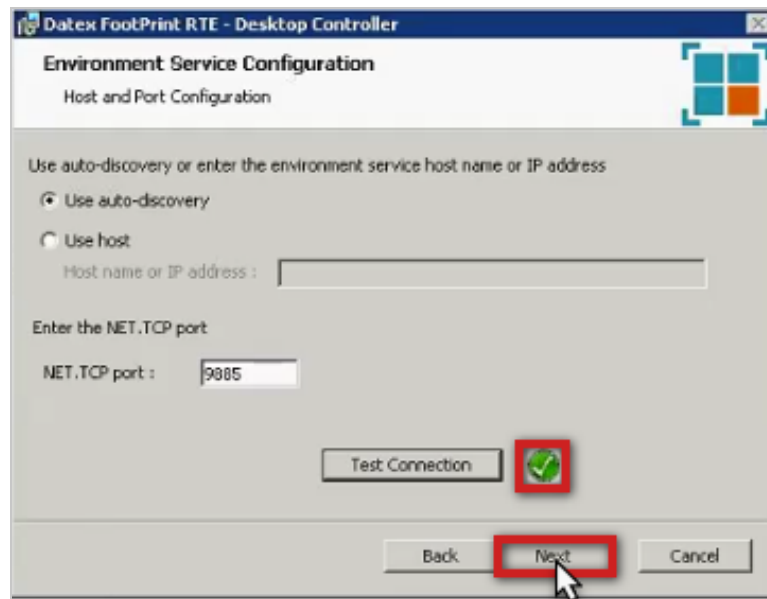
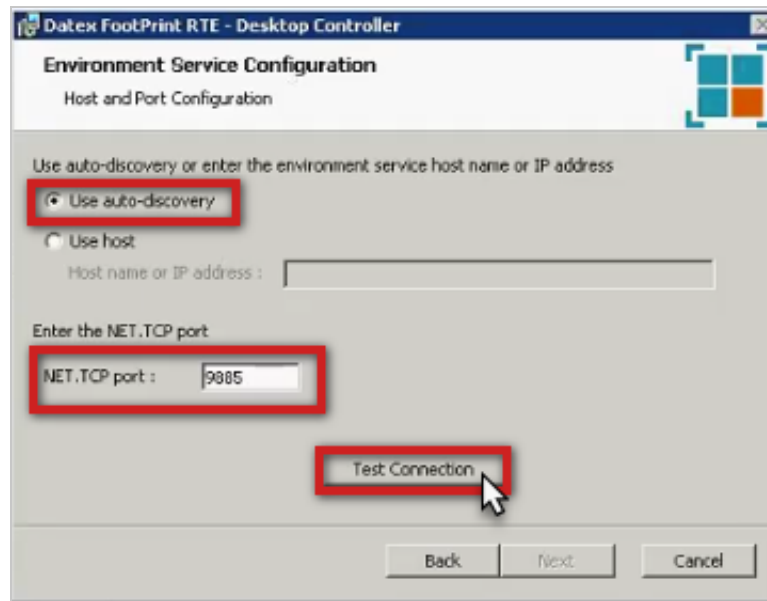




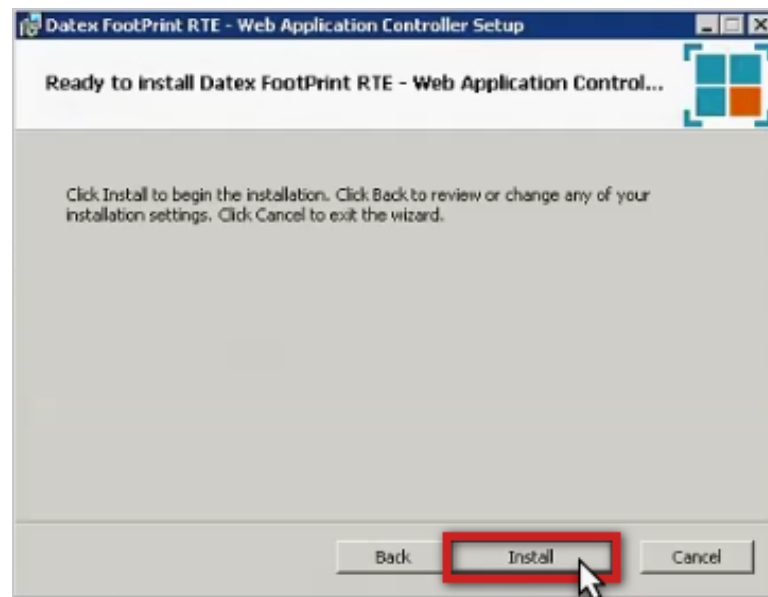
2. Enter your service account **Username** and **Password** credentials for your operation as created in your initial pre-requirements, clicking **Browse** if necessary. Then, click the **Test Credentials** button to ensure that the credentials match, and then click **Next**.



3. For setting up the production environment, you will be selecting **Use auto-discovery**. If setting up a test server connection, click **Use host** and enter the Host name or IP address for the test environment. In either situation, the NET.TCP port should be left as **9885**. Click Test Connection and if confirmed, you can click **next**.



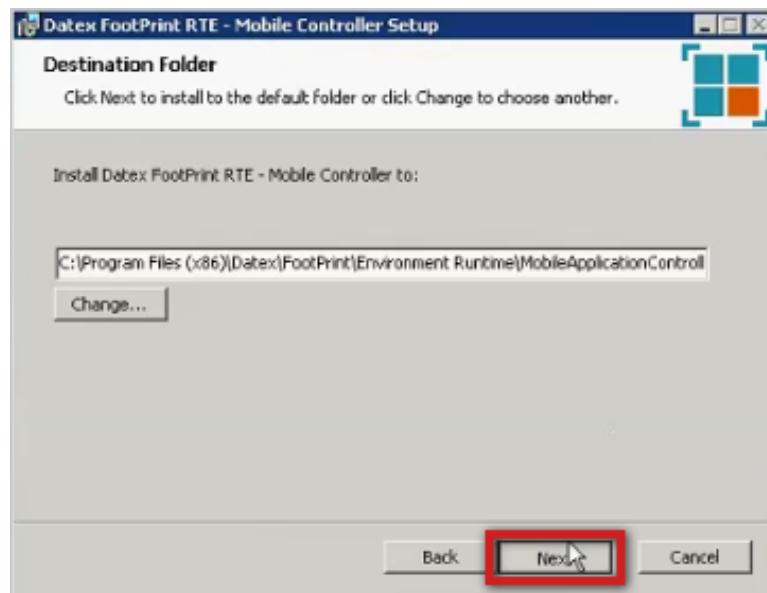
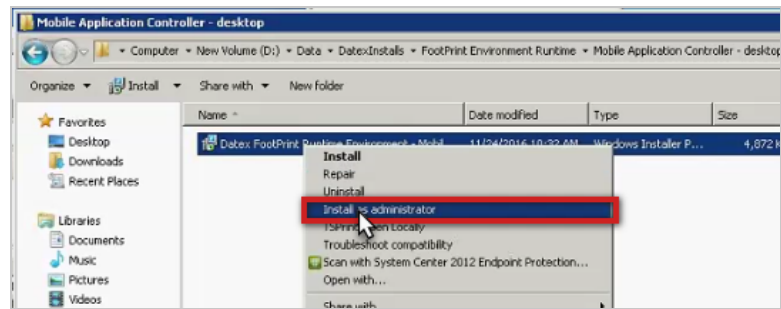
4. Finish the Web Application Controller set up by clicking **Install** button. Once it is complete, click the **Finish** button to close the Environment Service Setup Wizard.



FootPrint Mobile Desktop Installation

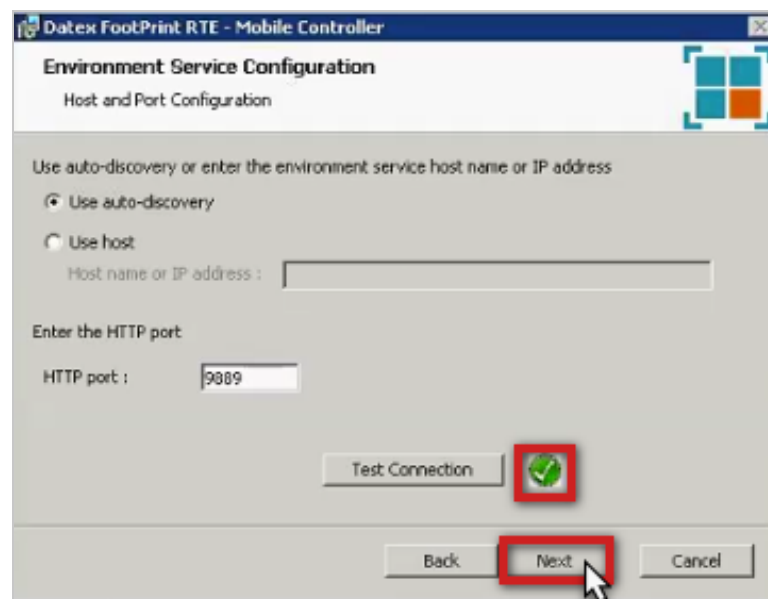
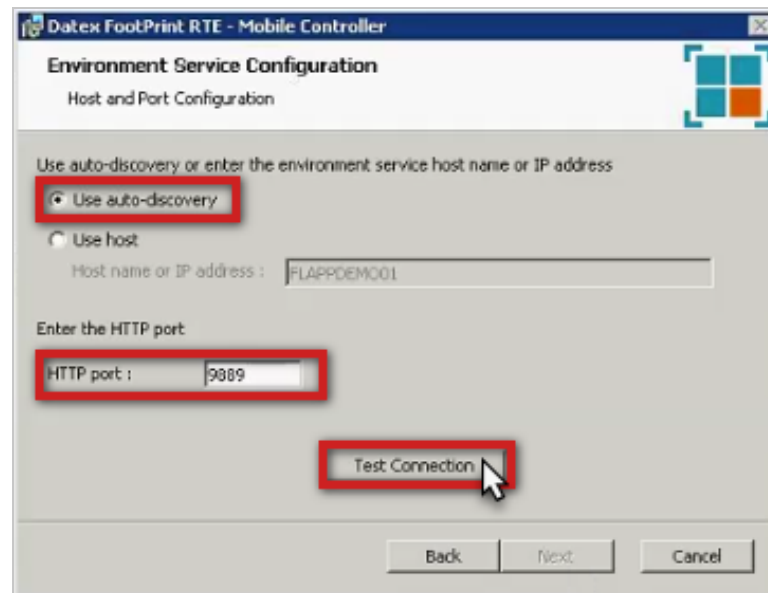
1. Run the FootPrint Mobile Desktop setup from **C:\Data\Datex\Installs\Footprint Environment Runtime\Mobile Application Controller - desktop\Datex FootPrint Runtime Environment - Mobile Application Controller.msi** by right-clicking and then selecting "Install as Administrator". Then follow the on-screen instructions.

Install and Upgrade FootPrint

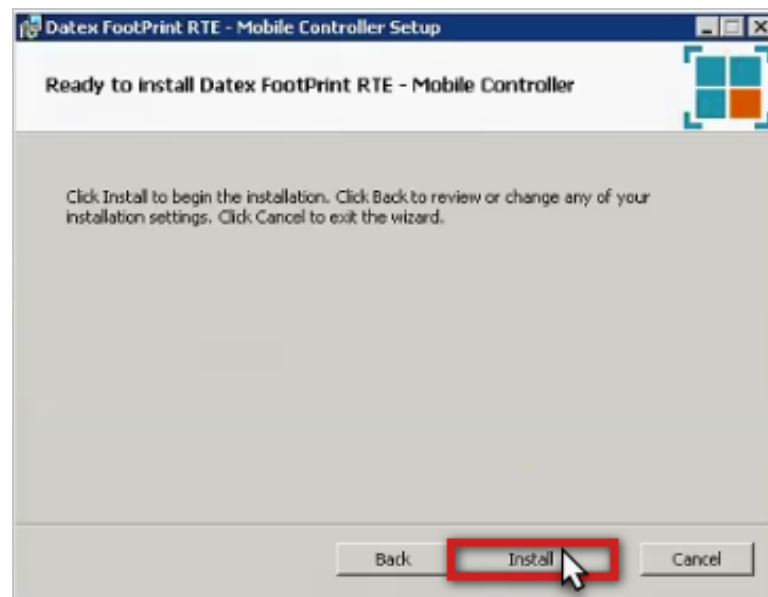


Install and Upgrade FootPrint

2. For setting up the production environment, you will be selecting **Use auto-discovery**. If setting up a test server connection, click **Use host** and enter the Host name or IP address for the test environment. In either situation, the HTTP port should be left as **9889**. Click **Test Connection** and if confirmed, you can click **next**.



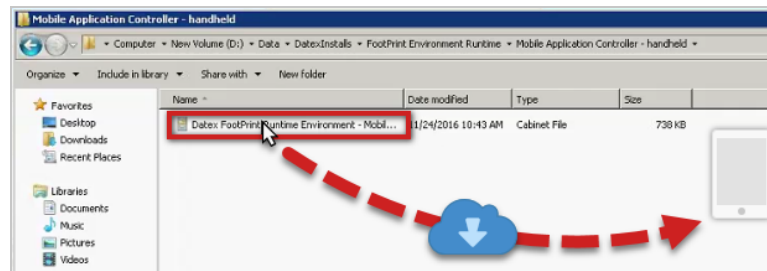
3. Finish the Mobile Desktop set up by clicking **Install** button. Once it is complete, click the **Finish** button to close the Environment Service Setup Wizard.



FootPrint Mobile Application Installation

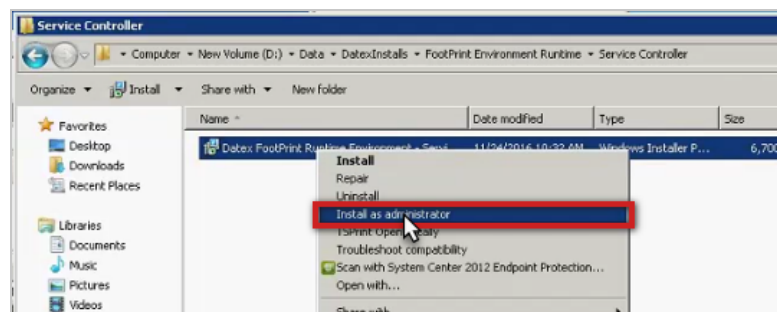
1. Copy the FootPrint Mobile Application setup from **C:\Data\Datex\Installs\Footprint Environment Runtime\Mobile Application Controller - handheld\Datex FootPrint Runtime Environment - Mobile Application Controller.cab** to the mobile device, then launch the application from inside the device. Then follow the on-screen instructions.

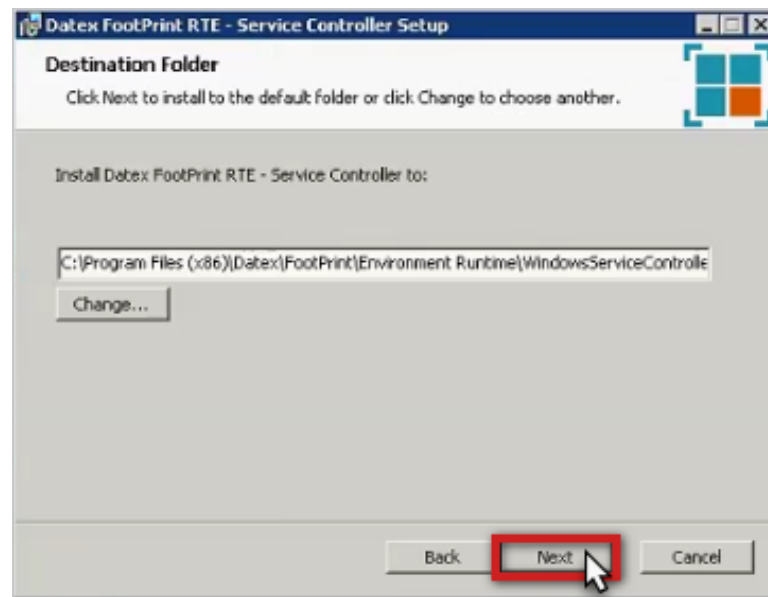
Install and Upgrade FootPrint



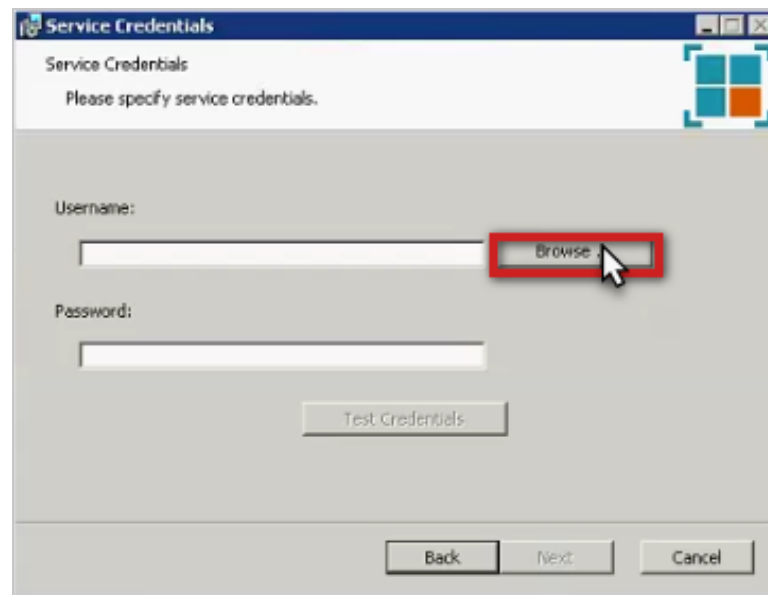
FootPrint Environment Service Controller Installation

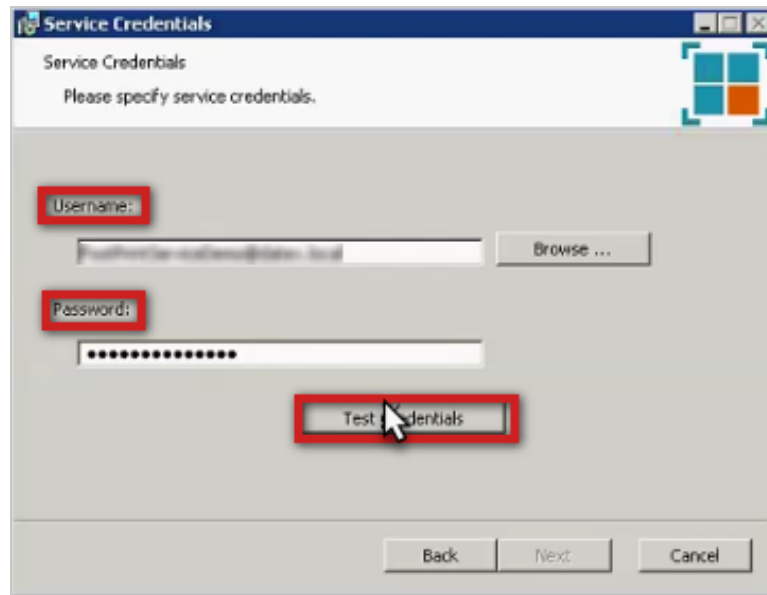
1. Run the FootPrint Service Controller setup from **C:\Data\Datex\Installs\Footprint Environment Runtime\Service Controller\Datex FootPrint Runtime Environment - Service Controller.msi** by right-clicking and then selecting "Install as Administrator". Then follow the on-screen instructions.



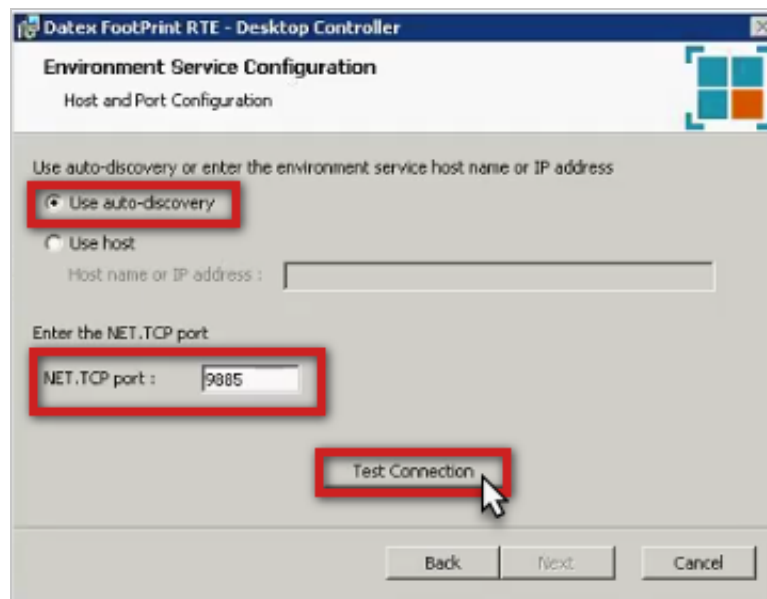


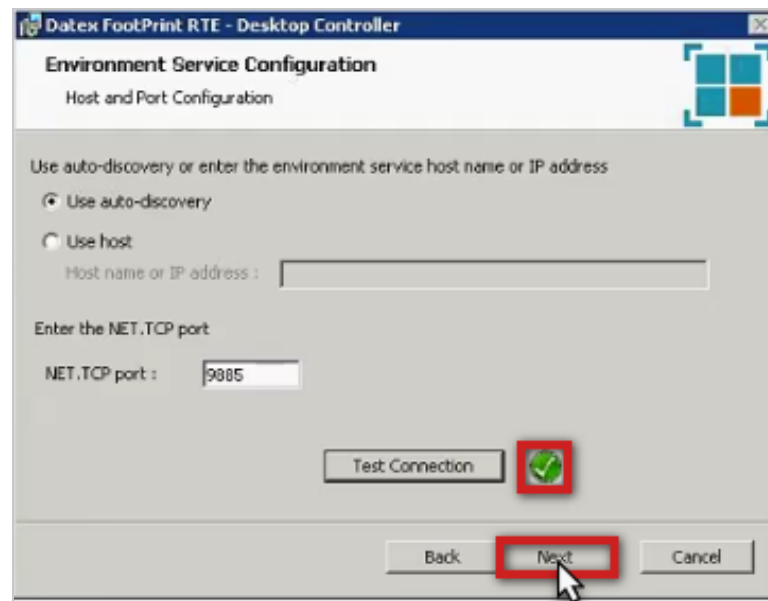
2. Enter your service account **Username** and **Password** credentials for your operation as created in your initial pre-requirements, clicking **Browse** if necessary. Then, click the **Test Credentials** button to ensure that the credentials match, and then click **Next**.



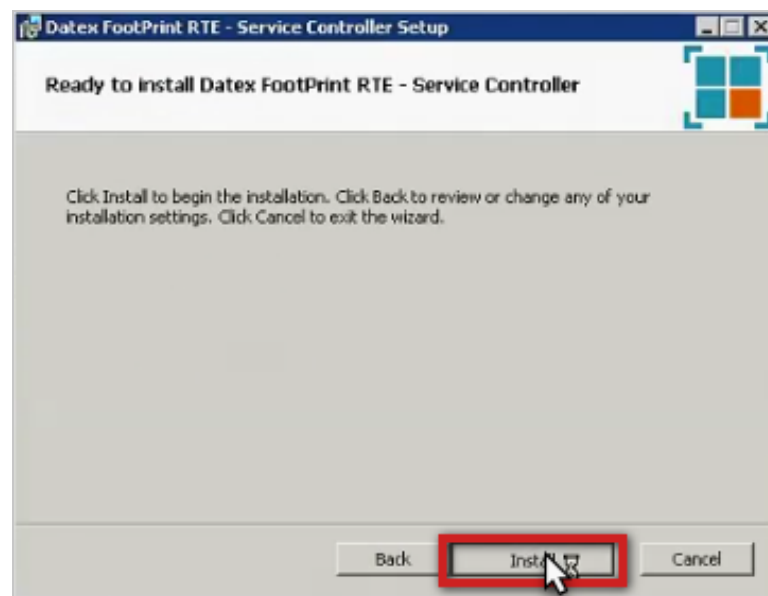


3. For setting up the production environment, you will be selecting **Use auto-discovery**. If setting up a test server connection, click **Use host** and enter the Host name or IP address for the test environment. In either situation, the NET.TCP port should be left as **9885**. Click Test Connection and if confirmed, you can click **next**.





4. Finish the Mobile Desktop set up by clicking **Install** button. Once it is complete, click the **Finish** button to close the Environment Service Setup Wizard.





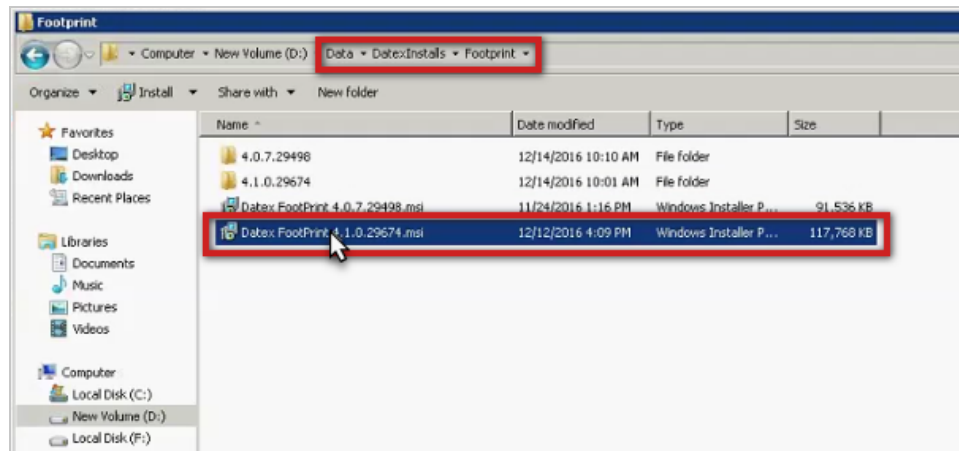
And that's it, you've installed and configured FootPrint for first time use. However, before you can jump in and start using it, we need to create an Environment for your operation in the FootPrint [Environment Manager](#).

Upgrade to a New Version of FootPrint

Step 1. Open the FootPrint Installer

When a new update is available for FootPrint, you can obtain a copy from us which will be downloaded to the machine running the program. Once downloaded, the installer for the new version will need to be ran.

1. Navigate to the directory where the FootPrint install file was placed. This should end in with the string Data\DatexInstalls\Footprint.
2. Find the Datex FootPrint X.X.X.XXXXX.msi (version number) and double-click it to run the installer.



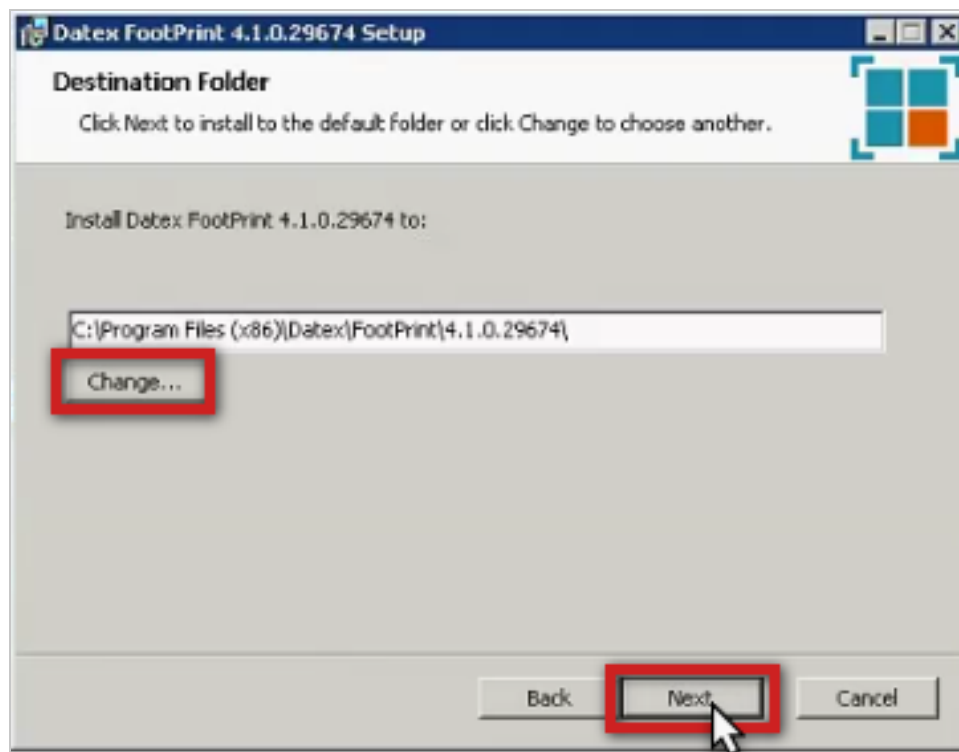
Step 2. Install the New Version of FootPrint

Now, we will walk through the actual installation steps..

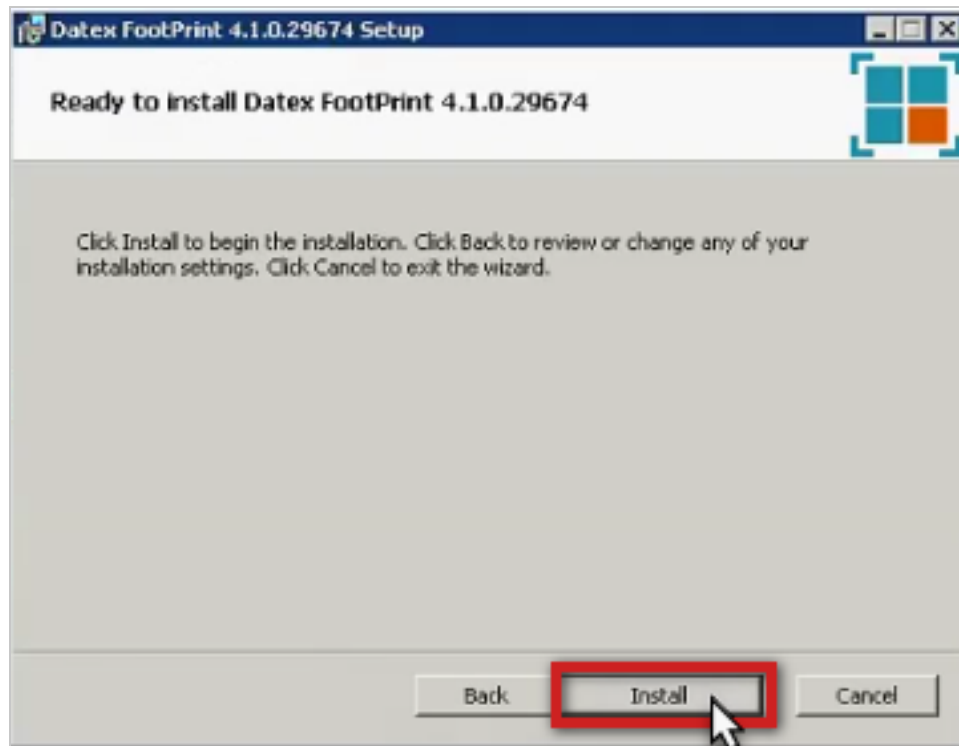
1. Click the **Next** button on the Welcome to Datex FootPrint Setup Wizard.



2. **Change** the installation path for the installation if desired, and then click **Next**.



3. Click **Install**.



4. Click **Finish** to complete the installation.

